



HONDA

C90K3

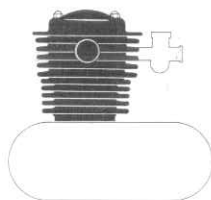
1

PARTS LIST

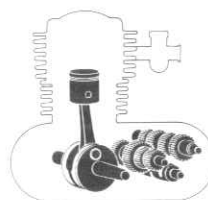
CONTENTS

● Contents-Engine group	Page 1
● Contents-Frame group	2
● Instruction for use of parts list	3
● How to use the flat rate time (F.R.T.)...	6
● Model photograph...	8
● Engine group	9
(address No. C2)	
● Frame group.....	26
(address No. G2)	
● Part No. Index.....	53

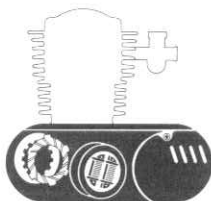
CONTENTS - ENGINE GROUP



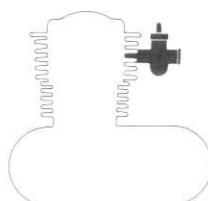
E- 1	Cylinder Head Cover	C 2
E- 2	Contact Breaker · Spark Advancer	C 3
E- 3	Cylinder Head · Cylinder	C 5
E- 4	Camshaft · Valve	C 6
E- 5	Cam Chain · Tensioner	C 7



E-10	Crankshaft · Piston	C15
E-11	Transmission	C16
E-12	Gearshift	D 1

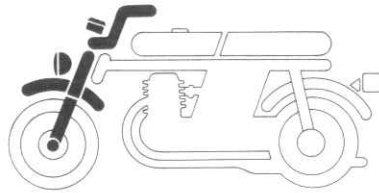


E- 6	Right Crankcase Cover	C 9
E- 7	Clutch	C10
E- 8	Left Crankcase Cover · A.C. Generator ..	C12
E- 9	Crankcase · Oil Pump	C14

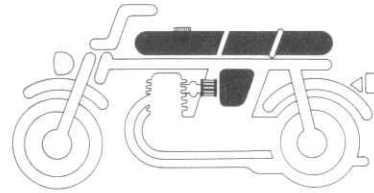


E-13	Carburetor	D 2
------	------------------	-----

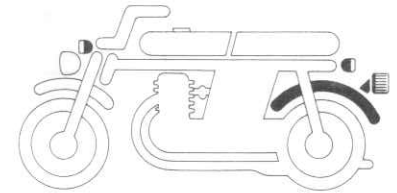
CONTENTS - FRAME GROUP



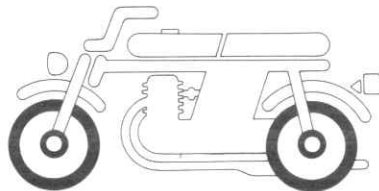
F- 1	Headlight · Speedometer	G 2
F- 2	Handle Switch · Lever · Cable	G 3
F- 3	Steering Handle · Top Bridge	G 4
F- 4	Top Cover · Front Carrier	G 5
F- 5	Front Fork · Front Fender	G 6
F- 6	Front Cushion	G 7



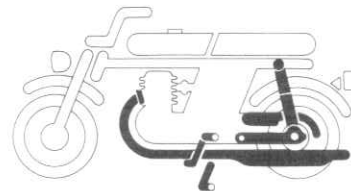
F-10	Front Cover · Air Cleaner	G13
F-11	Double Seat	G14
F-12	Fuel Tank	G15
F-13	Tool & Battery Boxes · Tool	G16



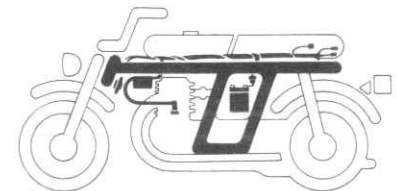
F-19	Winker (DK, DM)	H 7
F-19-1	Winker (U)	H 8
F-20	Taillight	H 9



F- 7	Front Wheel · Panel	G 8
F- 8	Rear Brake Panel	G10
F- 9	Rear Wheel	G11



F-14	Exhaust Muffler	H 1
F-15	Kick & Change Pedals · Step	H 2
F-16	Main Stand · Brake Pedal	H 3
F-17	Rear Fork · Chain Case	H 4
F-18	Rear Cushion	H 6



F-21	Wire Harness · Ignition Coil · Battery	H10
F-22	Frame Body	H12

INSTRUCTION FOR USE OF PARTS LIST

This parts list is to be used when ordering spare parts ; it contains all parts for model C90K3.

I. How To Order Parts

1. Information required

Spare parts orders must contain both the **part number** and the **stamped number(s)** as described below. This is because any changes and modifications of parts are registered at HONDA with the pertinent parts and stamped numbers.

Numbers needed :

- (a) Carburetor parts : Part number &
Stamped carburetor identification
number
- (b) Other parts : Part number &
Stamped frame number

2. Revisions

When modifications additions to this parts list are made, a revised edition will be issued at an appropriate time, with successively progressing revision numbers on the cover.

We advise to obtain such revisions in order to keep your parts lists up-to-date at all times. To check whether a parts list revision has been issued, please contact your HONDA distributor.

II. How To Read This Parts List

1. Make-up of the part number

(Example) General parts

Function and Component No. Model Code No. Color Code
 Subcontractor Designation
 Modification Designation

(Example) Bolts, nuts and other standard parts

Function and Dimension Chemical surface treatment

 Type No. ISO

2. Color code

The color code at the end of the part number indicates the color. Codes below ZA in alphabetical order (such as ZA, ZB, ZC, etc.) do not indicate the color directly, but reference must be made to the HONDA code given in the "Description" column of this parts list.

Color code		Color Description
Parts code	HONDA code	
A		White
AW	R-8	Bright red
B	NH-1	Black
UL	B-5M	Samoa blue metallic
WF	NH-24	Ceramic white
XW		Chrome plated

3. Abbreviations

The following abbreviations are used in this parts list.

ASSY. Assembly	KPH Kilometers per hour
COMP. ... Complete	MPH Miles per hour
R. Right	L (100L) ... Link (100Links)
L. Left	A.C. Alternating current
STD. Standard	D.C. Direct current
MM Millimeter	IN. Inlet
G Gram	EX. Exhaust
T (22T) ... Tooth (22Teeth)	FR. Front
A Ampere	RR. Rear
V Volt	HEX. Hexagonal
W Watt	

4. Dimensions

All dimensions are given in millimeters (mm) except in the case of steel balls, tires and tire tubes.

Parts	Example	Interpretation
Bolt (Screw)	6×12	6mm diameter, 12mm length
Pin	8×14	8mm diameter, 14mm length
O-Ring	9.5×1.6	9.5mm diameter, 1.6mm thickness
Oil seal	14×24×5	14mm inside diameter, 24mm outside diameter, 5mm thickness
Tube	5×130	5mm inside diameter, 130mm length

5. Supersedence of parts

Part numbers given under the part name in the "Description" column indicate that the part number has been superseded by that part number. HONDA may make such supersedence without notice.

6. Assemblies

Sections framed with broken lines in the exploded view drawings are available as complete assemblies. (Their individual parts can also be obtained.)

7. Required quantity

The number given in the "Reqd. No." column indicates the quantity of parts used in the section described in that block.

Parts with quantities in () represent optional or oversize parts.

8. Part Modifications-Applicable Serial Numbers

In cases where a part has been modified, the serial number of the first vehicle (or frame, engine, carburetor, final drive gear) bearing the modification is listed in the "Serial No." column.

9. Models, Area Codes and Initial Serial No's.

Models, Area Codes and Initial Serial No's. given in this parts list can be identified as follows.

Parts with area codes are exclusive for models destined for countries designated.

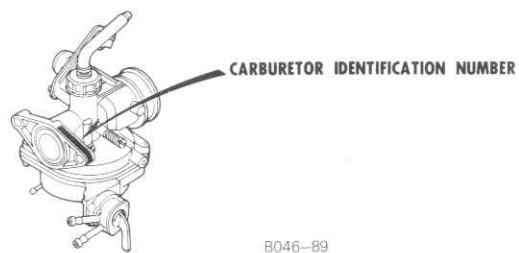
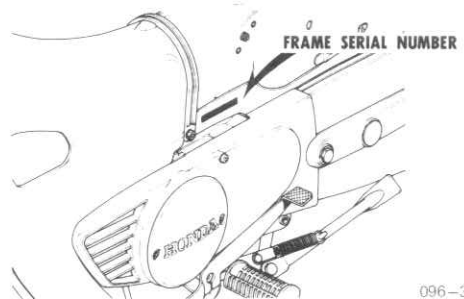
If no area codes are listed, parts are for common use.

Model	Area Code	Type	Initial Frame Serial No.	Initial Carburetor Identification No.
C90K3	DK	General export (KPH)	This type is not yet produced.	
	DM	General export (MPH)	This type is not yet produced.	
	U	Australia	C90-3105748~	PB25 A <u>A</u> ~

* Of carburetor identification numoers, only the portions underlined in the example below are used for registration.

PB25 A A KC ア

10. Location of stamped serial number



January 20, 1977
HONDA MOTOR CO., LTD.

HOW TO USE THE FLAT RATE TIME (F.R.T.)

This F.R.T. (Flat Rate Time) is used to determine the standard labor time allowed for replacement of parts covered by the warranty during the period the warranty is in effect. The F.R.T. for those parts which are not listed herein should be determined from the operation closely related to the replacement of that part.

1. The F.R.T. is based on the following servicing conditions :

- A liberal allowance is added to the net servicing time.
- Standard times specified are based on the condition that the necessary servicing tools listed in the Service Manual (Motorcycle) which describes the Honda service policy are available close at hand and the work performed by a mechanic with normal skill.
- Time required for inspection and operational test following the servicing is included in the F.R.T.

2. Method of computing

The job times are listed in tenth of an hour to simplify computation.

(Example) $0.3 = 18$ minutes
 $5.6 = 5$ hours and 36 minutes

CONVERSION CHART			
Hours	Minutes	Hours	Minutes
0.1	6	0.6	36
0.2	12	0.7	42
0.3	18	0.8	48
0.4	24	0.9	54
0.5	30	1.0	60

3. Computing the F.R.T.

When several jobs are performed at the same time, make the calculation in the following manner.

a. Jobs of non duplicated nature

The F.R.T. for the job is obtained by totalling the F.R.T. for each part replaced.

(Example) Replacement of cylinder and clutch spring.

Service Item	F.R.T.
CYLINDER	1.4
CLUTCH SPRING	0.9

The F.R.T. for the job is : $1.4 + 0.9 = 2.3$

b. Jobs of duplicated nature

1. Take the F.R.T. for the last part to be replaced.

(Example) Replacement of piston and cylinder head gasket.

Service Item	F.R.T.
CYLINDER HEAD GASKET	1.1
PISTON	1.5

The F.R.T. for the job is : 1.5

c. Jobs of partially related nature

Total up the F.R.T. for all of the parts replaced and then subtract the F.R.T. for the duplicated operation.

(Example) Replacement of gear shift drum and crankshaft assembly.

Service Item	F.R.T.
GEAR SHIFT DRUM	☆3.5
CRANKSHAFT	☆3.8
CRANKCASE DISASSEMBLY	☆3.3

The F.R.T. for the job is : $(3.5 + 3.8) - 3.3 = 4.0$

Crankcase disassembly is the duplicated operations.

●The F.R.T. shown with (☆) includes engine removal and installation.

4. Operations other than replacing parts.

a. Removal and installation

No.	Service Item	F.R.T.
1	Engine	1.5
2	Cylinder head	1.1
3	Carburetor	0.4

b. Adjustment, measurement and cleaning of engine.

No.	Service Item	F.R.T.
1	Point-adjustment (including ignition timing adjustment)	0.3
2	Ignition timing-adjustment	0.2
3	Spark plug-adjustment and cleaning	0.1
4	Tappet adjustment	0.2
5	Carburetor idle-adjustment	0.1
6	Engine oil-inspection (excluding oil change)	0.1
7	Clutch-adjustment	0.1
8	Cleaner element-cleaning	0.1
9	Compression-pressure measurement	0.1
10	Battery-checking of electrolyte level and gravity	0.1
11	Carburetor-float level measurement	0.5
12	Oil filter screen-cleaning	0.7

Frame

No.	Service Item	F.R.T.
1	Brake-adjustment (front)	0.1
2	Brake-adjustment (rear)	0.1
3	Brake-operation test	0.1
4	Headlight-aimings	0.2
5	Drive chain (includes tension adjustment however, does not include sprocket)	0.1

c. Overhaul

1. Overhaul

No.	Service Item	F.R.T.
1	Carburetor	0.7



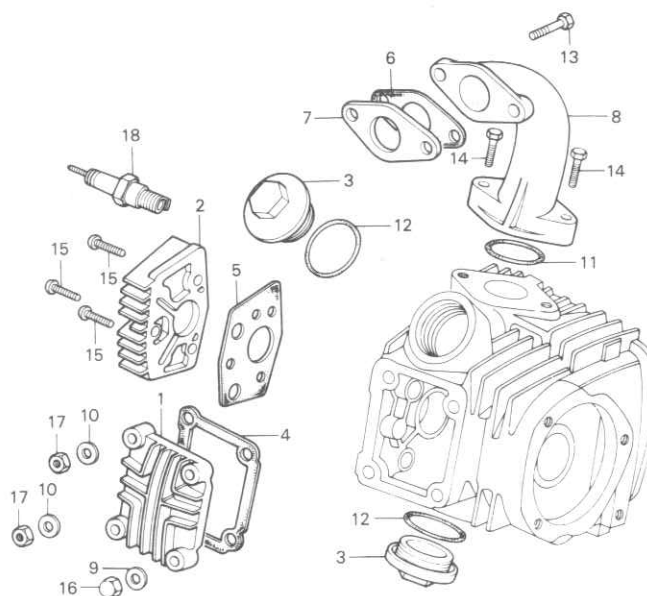
C90K3-DK



Block No.

E-1

Cylinder Head Cover



B046-90

Service Item	F.R.T.	Ref. No.	Part No.	Description	Reqd. No. C90K3	Serial No.	Area Code
INLET PIPE/CARBURETOR INSULATOR	0.3	1	12301-096-000	COVER, CYLINDER HEAD	1		
CYLINDER HEAD COVER	0.1	2	12331-128-000	COVER, ROCKER ARM SIDE	1		
• ROCKER ARM SIDE COVER		3	12361-028-000	CAP, TAPPET ADJUSTING HOLE	2		
• SPARK PLUG		4	12391-028-000	GASKET, CYLINDER HEAD COVER	1		
		5	12394-028-010	GASKET, R. CYLINDER HEAD SIDE COVER	1		
		6	16201-096-720	GASKET, INSULATOR	1		
		7	16211-096-720	INSULATOR, CARBURETOR	1		
		8	17111-096-720	PIPE, IN.	1		
		9	90442-028-000	WASHER, SEALING, 8MM	1		
		10	90483-028-000	WASHER, 8MM	3		
		11	91301-028-000	O-RING, 27X2.0	1		
		12	91302-200-000	O-RING, 33.5X3	2		
		13	92000-06022	BOLT, HEX., 6X22	2		
		14	92000-06025	BOLT, HEX., 6X25	2		
		15	93500-06020	SCREW, PAN, 6X20	3		
		16	94021-08000	NUT, CAP, 8MM	1		
		17	94030-08000	NUT, HEX., 8MM	3		
		18	98066-56715	PLUG, SPARK (D-6HS NGK)	1		
			98066-56724	PLUG, SPARK (X-20FS ND)	1		

1977.01.20

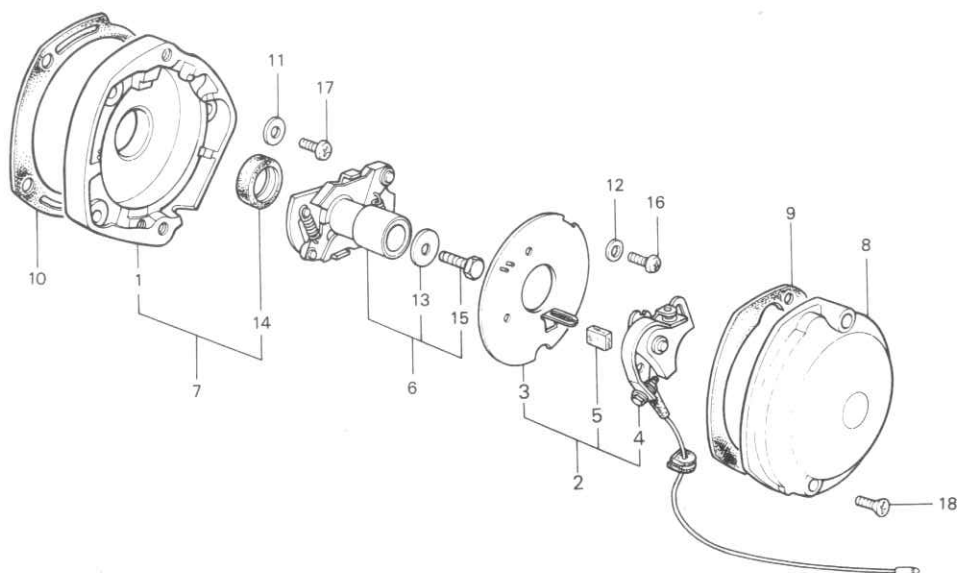
C2



Block No.

E-2

**Contact Breaker •
Spark Advancer**



B096-46

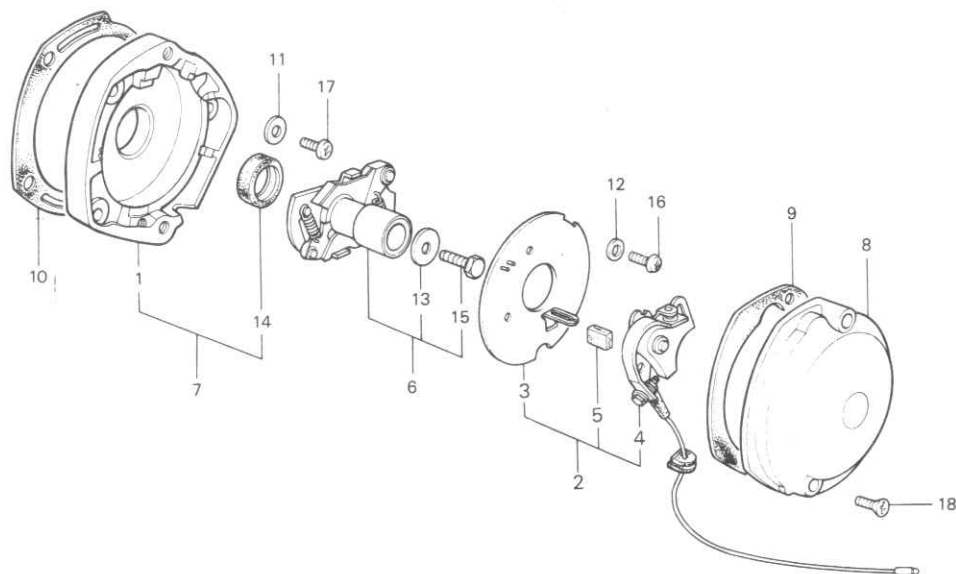
Service Item	F.R.T.	Ref. No.	Part No.	Description	Reqd. No. C90K3	Serial No.	Area Code
CONTACT BREAKER BASE/ 13 x 22 x 5 OIL SEAL	0.6	1	12332-028-030	BASE, CONTACT BREAKER	1		
CONTACT BREAKER ASSY. • SPARK ADVANCER ASSY./ POINT BASE ASSY.	0.5	2	30200-052-013	BREAKER ASSY., CONTACT (KOKUSAN)	1		
			30200-052-014	BREAKER ASSY., CONTACT (ND)	1		
			30200-052-154	BREAKER ASSY., CONTACT (TOYO)	1		
		3	30201-107-154	PLATE, CONTACT BREAKER BASE (TOYO)	1		
CONTACT BREAKER	0.4	4	30202-028-003	BREAKER, CONTACT (KOKUSAN)	1		
POINT COVER/OIL FELT	0.1		30202-107-004	BREAKER, CONTACT (ND)	1		
			30202-107-154	BREAKER, CONTACT (TOYO)	1		
		5	30205-028-003	FELT, OIL (KOKUSAN)	1		
			30205-028-004	FELT, OIL (ND)	1		
			30205-300-154	FELT, OIL (TOYO)	1		
		6	30220-053-003	ADVANCER ASSY., SPARK (KOKUSAN)	1		
			30220-053-004	ADVANCER ASSY., SPARK (ND)	1		
			30220-053-154	ADVANCER ASSY., SPARK (TOYO)	1		
		7	30360-028-020	BASE ASSY., POINT	1		
		8	30370-046-000	COVER, POINT	1		
		9	30391-028-000	GASKET, POINT COVER	1		
		10	30392-028-020	GASKET, POINT BASE	1		
		11	90441-028-010	WASHER, SEALING, 6MM	3		
		12	90482-028-000	WASHER, 5MM	2		
		13	90486-028-000	WASHER, SPARK ADVANCER SETTING	1		
		14	91201-028-000	OIL SEAL, 13X22X5	1		
		15	92000-06014	BOLT, HEX., 6X14	1		
		16	93500-05010-0A	SCREW, PAN, 5X10	2		
1977.01.20				C3			



Block No.

E-2

**Contact Breaker •
Spark Advancer**



B096-46

Service Item	F.R.T.	Ref. No.	Part No.	Description	Reqd. No. C90K3	Serial No.	Area Code
		17	93500-06012	SCREW, PAN, 6X12	3		
		18	93700-05022-0B	SCREW, OVAL, 5X22	2		
		1977.01.20					
		C4					

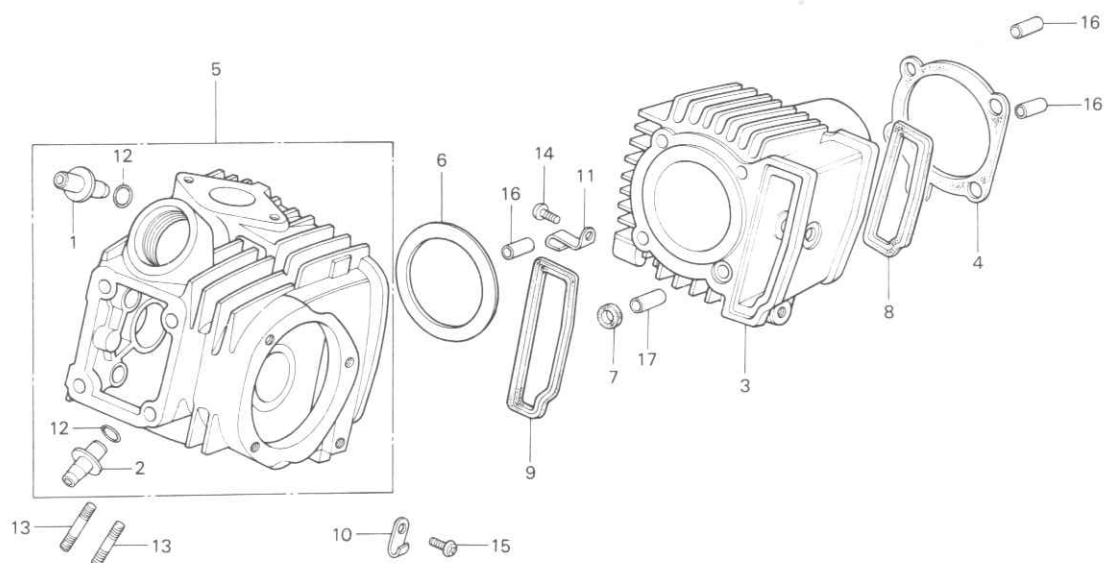


Block No.

E-3

Cylinder Head •

Cylinder



B096-47

Service Item	F.R.T.	Ref. No.	Part No.	Description	Reqd. No. C90K3	Serial No.	Area Code
CYLINDER HEAD COMP.	1.8	1	12021-028-340	GUIDE, IN. VALVE	1		
VALVE GUIDE	1.5	2	12023-028-330	GUIDE, EX. VALVE	1		
* Reaming included add 0.2		3	12100-028-120	CYLINDER COMP.	1		
Valve seat refacing excluded		4	12191-028-020	GASKET, CYLINDER	1		
If it refaced add more 0.2		5	12200-028-120	HEAD COMP., CYLINDER	1		
CYLINDER COMP./CYLINDER GASKET	1.4	6	12251-028-030	GASKET, CYLINDER HEAD	1		
CYLINDER HEAD GASKET	1.1	7	12261-105-690	GASKET, CYLINDER STUD	1		
6 x 32 STUD BOLT	0.3	8	12901-028-020	GASKET A, CAM CHAIN CHAMBER	1		
* Add 0.1		9	12902-105-690	GASKET B, CAM CHAIN CHAMBER	1		
		10	16236-045-010	CLAMPER, OVER FLOW TUBE	1		
		11	32906-061-000	CLIP, HIGH TENSION CORD	1		
		12	91305-028-158	O-RING, 9X1.6	2		
		13	92700-06032	BOLT, STUD, 6X32	2		
		14	93500-06010	SCREW, PAN, 6X10	1		
		15	93500-06012	SCREW, PAN, 6X12	1		
		16	94301-10140	PIN A, DOWEL, 10X14	3		
		17	94301-10200	PIN A, DOWEL, 10X20	1		

1977.01.20

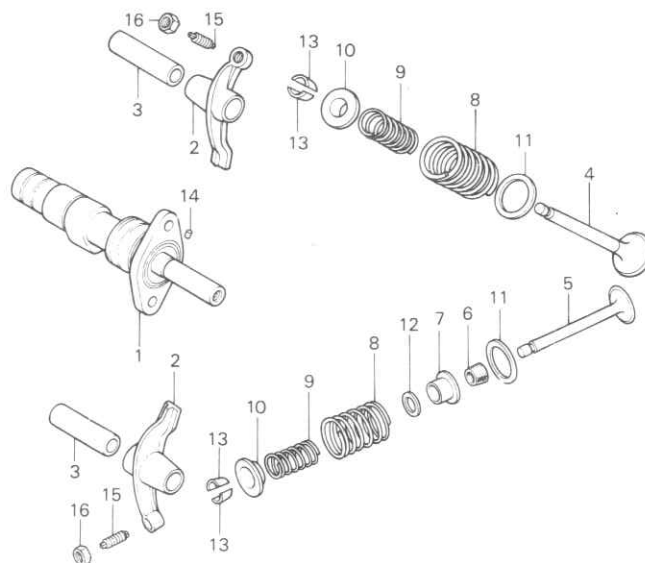
C5



Block No.

E-4

Camshaft • Valve



B096-48

Service Item	F.R.T.	Ref. No.	Part No.	Description	Reqd. No. C90K3	Serial No.	Area Code
VALVE	1.4	1	14101-052-000	CAMSHAFT	1		
* Add 0.2 reaming included		2	14431-028-010	ARM, VALVE ROCKER	2		
VALVE SPRING and its related parts	1.3	3	14451-028-010	SHAFT, VALVE ROCKER ARM	2		
* Add 0.1		4	14711-028-000	VALVE, IN.	1		
CAMSHAFT/VALVE ROCKER ARM/ VALVE ROCKER ARM SHAFT	1.2	5	14721-028-602	VALVE, EX.	1		
		6	14730-028-013	SEAL, VALVE STEM	1		
		7	14731-028-000	CAP, VALVE STEM SEAL	1		
		8	14751-028-010	SPRING, VALVE (OUTER)	2		
		9	14761-028-020	SPRING, VALVE (INNER)	2		
		10	14771-030-000	RETAINER, VALVE SPRING	2		
		11	14775-028-010	SEAT, VALVE SPRING	2		
		12	14776-028-000	SEAT, VALVE SPRING INNER	1		
		13	14781-001-010	COTTER, VALVE	4		
		14	30905-216-000	PIN, CAMSHAFT, 3X5.2	1		
		15	90012-200-000	SCREW, TAPPET ADJUSTING	2		
		16	90206-001-000	NUT, TAPPET ADJUSTING	2		

1977.01.20

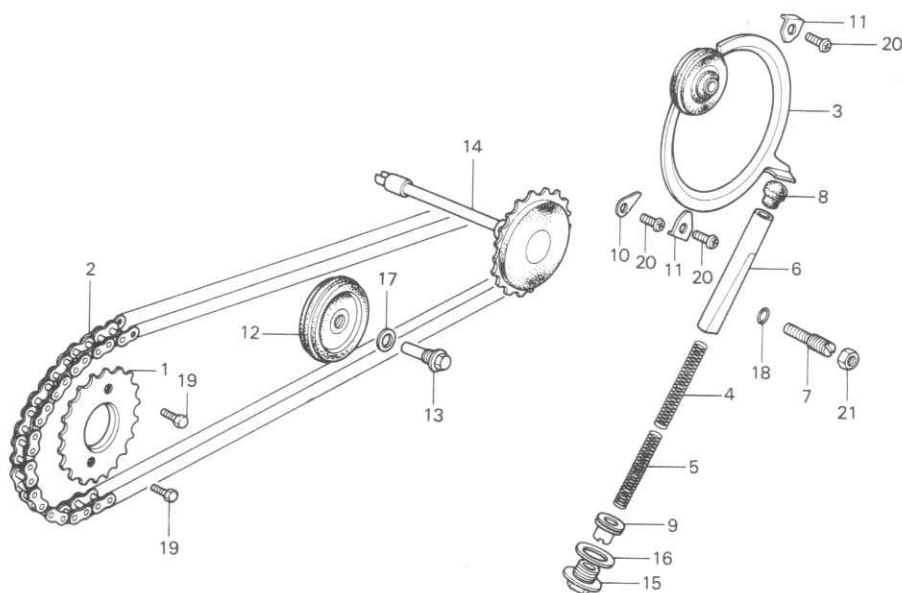
C6



Block No.

E-5

**Cam Chain ·
Tensioner**



B096-49

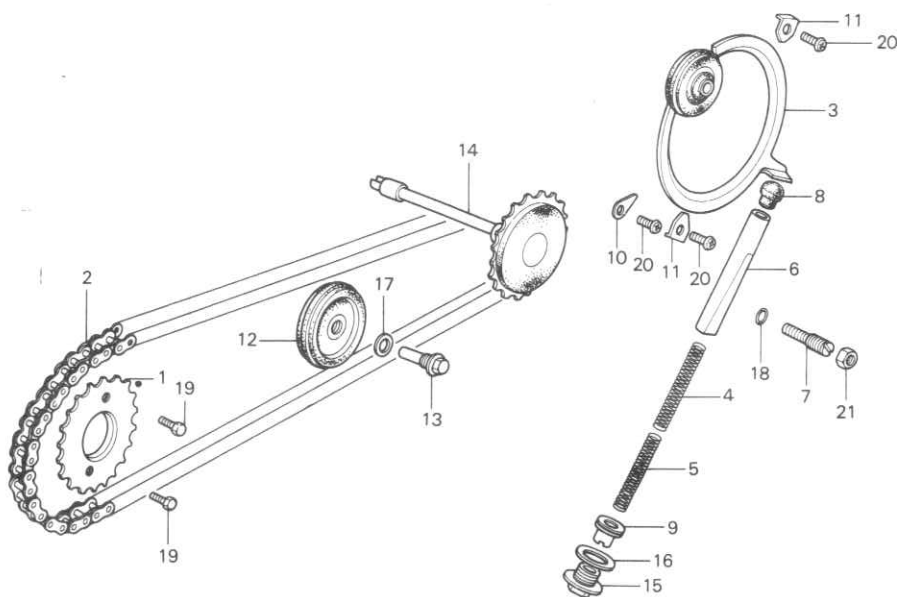
Service Item	F.R.T.	Ref. No.	Part No.	Description	Reqd. No. C90K3	Serial No.	Area Code
CAM CHAIN	1.6	1	14321-028-000	SPROCKET, CAM (30T)	1		
CAM CHAIN TENSIONER COMP.	1.5	2	14401-028-003	CHAIN, CAM (DK210H-86L DAIDO)	1		
CAM CHAIN GUIDE ROLLER	1.2	3	14500-096-020	TENSIONER COMP., CAM CHAIN	1		
CAM SPROCKET	1.1	4	14541-086-010	SPRING A, CAM CHAIN TENSIONER	1		
CAM CHAIN GUIDE SPROCKET COMP.	0.4	5	14542-086-000	SPRING B, CAM CHAIN TENSIONER	1		
CAM CHAIN TENSIONER PUSH ROD COMP. and its related parts	0.2	6	14550-086-010	ROD COMP., CAM CHAIN TENSIONER PUSH	1		
		7	14561-086-010	BOLT, CAM CHAIN TENSIONER ADJUSTING	1		
		8	14561-096-000	HEAD, CAM CHAIN TENSIONER PUSH ROD	1		
		9	14562-086-000	BOLT B, CAM CHAIN TENSIONER ADJUSTING	1		
		10	14592-028-010	PLATE A, CAM CHAIN TENSIONER SETTING	1		
		11	14593-028-010	PLATE B, CAM CHAIN TENSIONER SETTING	2		
		12	14610-105-690	ROLLER, CAM CHAIN GUIDE	1		
		13	14615-035-000	PIN, CAM CHAIN GUIDE ROLLER	1		
		14	14670-028-000	SPROCKET COMP., CAM CHAIN GUIDE (29T)	1		
		15	90081-086-000	BOLT, SEALING, 14MM	1		
		16	90441-035-000	WASHER, SEALING, 14MM	1		
		17	90481-035-000	WASHER, 8MM	1		
		18	91301-216-000	O-RING, 5.5X1.5	1		
		19	92000-06010	BOLT, HEX., 6X10	2		
		20	93500-06012	SCREW, PAN, 6X12	3		
1977.01.20					C7		



Block No.

E-5

**Cam Chain •
Tensioner**



B096-49

Service Item	F.R.T.	Ref. No.	Part No.	Description	Reqd. No. C90K3	Serial No.	Area Code
		21	94002-08000-0S	NUT, HEX., 8MM	1		

1977.01.20

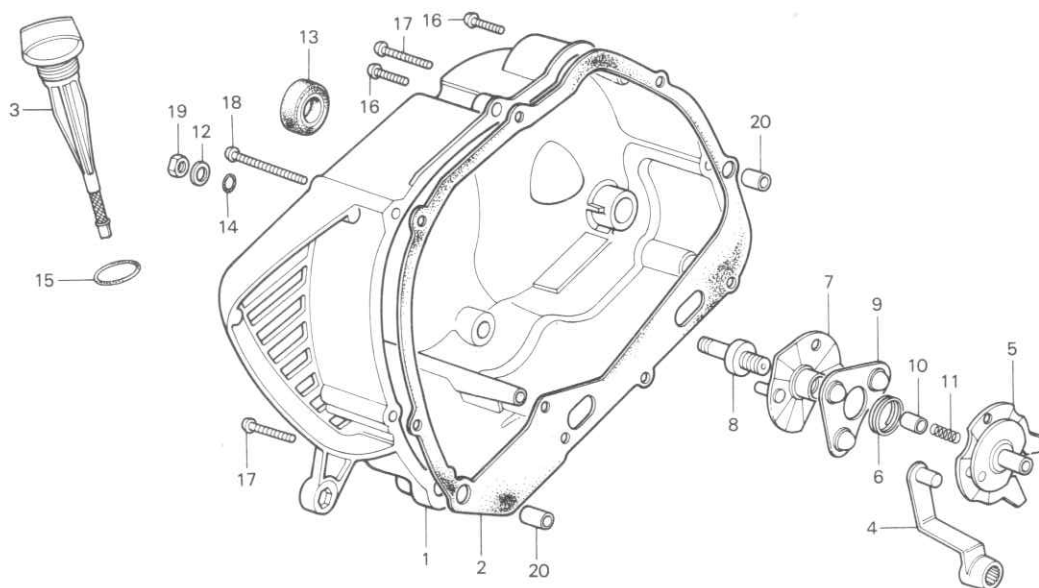
C8



Block No.

E-6

Right Crankcase Cover



B096-50

Service Item	F.R.T.	Ref. No.	Part No.	Description	Reqd. No. C90K3	Serial No.	Area Code
R. CRANKCASE COVER	0.8	1	11330-096-010	COVER COMP., R. CRANKCASE	1		
CLUTCH LIFTER PLATE	0.7	2	11393-028-020	GASKET, R. CRANKCASE COVER	1		
• 14 x 26 x 7 OIL SEAL		3	15650-086-000	GAUGE, OIL LEVEL	1		
R. CRANKCASE COVER GASKET	0.6	4	22811-046-010	LEVER, CLUTCH	1		
• CLUTCH LEVER/CLUTCH CAM PLATE		5	22820-918-000	PLATE COMP., CLUTCH CAM	1		
		6	22825-046-000	SPRING, CAM PLATE SIDE	1		
		7	22830-046-000	PLATE, CLUTCH LIFTER	1		
		8	22846-053-010	BOLT, CLUTCH ADJUSTING	1		
		9	22860-046-000	RETAINER, CLUTCH BALL	1		
		10	25551-918-000	THROUGH, OIL	1		
		11	25555-046-000	SPRING, OIL THROUGH	1		
		12	90485-040-000	WASHER, 8MM	1		
		13	91203-023-020	OIL SEAL, 14X26X7	1		
		14	91303-001-000	O-RING, 8MM	1		
		15	91307-035-000	O-RING, 18X3	1		
		16	93500-06025	SCREW, PAN, 6X25	5		
		17	93500-06040	SCREW, PAN, 6X40	2		
		18	93500-06065	SCREW, PAN, 6X65	2		
		19	94001-08000-0S	NUT, HEX., 8MM	1		
		20	94301-10140	PIN A, DOWEL, 10X14	2		

1977.01.20

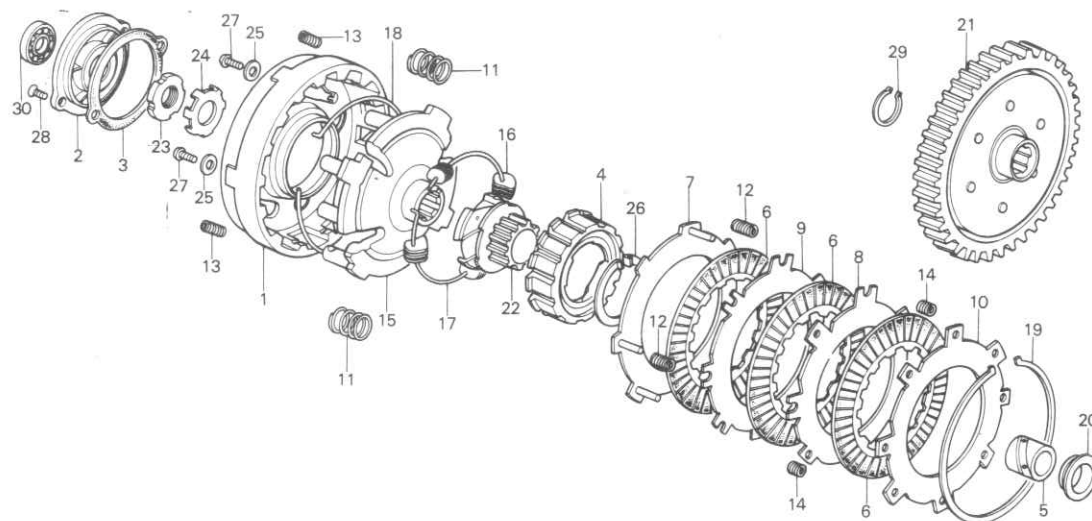
C9

C 10

Block No.

E-7

Clutch



8096-51

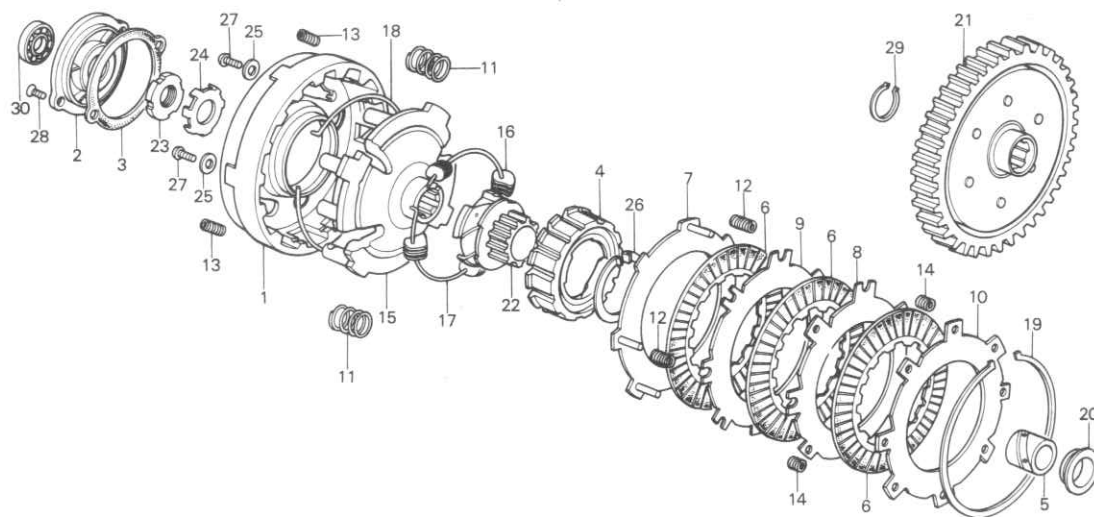
Service Item	F.R.T.	Ref. No.	Part No.	Description	Reqd. No. C90K3	Serial No.	Area Code
CLUTCH OUTER/CLUTCH CENTER and those related parts	0.9	1	22101-046-030	OUTER, CLUTCH	1		
		2	22111-028-010	COVER, CLUTCH OUTER	1		
PRIMARY DRIVEN GEAR	0.7	3	22112-028-000	GASKET, CLUTCH OUTER COVER	1		
• CLUTCH OUTER COVER/BALL BEARING		4	22121-096-700	CENTER, CLUTCH	1		
		5	22131-121-690	GUIDE, CLUTCH CENTER	1		
		6	22201-121-690	DISK, CLUTCH FRICTION	3		
		7	22311-096-000	PLATE A COMP., CLUTCH	1		
		8	22321-046-010	PLATE B, CLUTCH	1		
		9	22331-046-000	PLATE C, CLUTCH	1		
		10	22341-046-000	PLATE D, CLUTCH	1		
		11	22401-046-000	SPRING, CLUTCH	4		
		12	22411-096-000	SPRING, CLUTCH FREE	4		
		13	22421-028-000	SPRING, CLUTCH DAMPER	4		
		14	22431-046-010	SPRING, SUB CLUTCH FREE	2		
		15	22511-096-000	PLATE, DRIVE	1		
		16	22531-033-010	WEIGHT, CLUTCH	28		
		17	22535-033-000	RING, CENTER CLUTCH WEIGHT	1		
		18	22536-033-000	RING, CLUTCH WEIGHT STOPPER	1		
		19	22901-102-700	SET RING, 102.5MM	1		
		20	22911-046-000	COLLAR, 20MM	1		
		21	23110-046-000	GEAR, PRIMARY DRIVEN (67T)	1		
		22	23111-096-000	GEAR, DRIVE (18T)	1		
		23	90231-028-000	NUT, LOCK, 16MM	1		
		24	90431-028-010	WASHER, LOCK, 16MM	1		
		25	90483-034-000	WASHER, STOPPER	4		
1977.01.20					C10		



Block No.

E-7

Clutch



B096-51

Service Item	F.R.T.	Ref. No.	Part No.	Description	Reqd. No. C90K3	Serial No.	Area Code
		26	90603-046-000	CIR CLIP, 38MM	1		
		27	93500-05008-0A	SCREW, PAN, 5X8	4		
		28	93600-05012-0A	SCREW, FLAT, 5X12	2		
		29	94510-20000	CIR CLIP, EXTERNAL, 20	1		
		30	96100-60000	BEARING, RADIAL BALL, 6000	1		

1977.01.20

C11

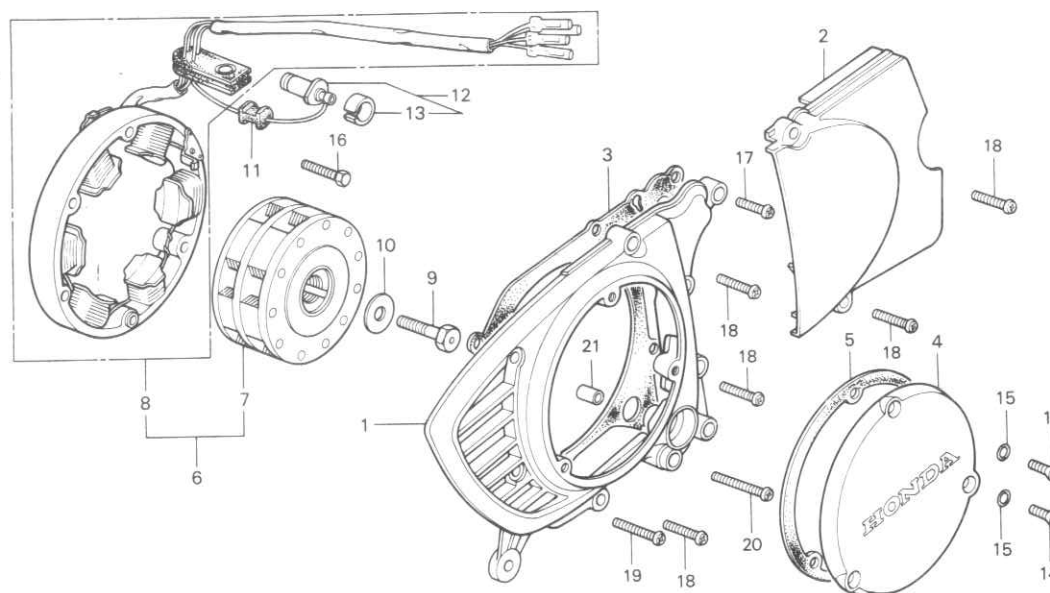
C 12

Block No.

E-8

Left Crankcase Cover •

A.C. Generator



B096-52

Service Item	F.R.T.	Ref. No.	Part No.	Description	Reqd. No. C90K3	Serial No.	Area Code
A.C. GENERATOR ASSY.	0.3	1	11341-096-010	COVER COMP., L. CRANKCASE	1		
• STATOR COMP.		2	11361-096-000	COVER, L. CRANKCASE RR.	1		
ROTOR COMP.	0.2	3	11394-028-040	GASKET, L. CRANKCASE COVER	1		
• L. CRANKCASE COVER COMP.		4	11431-028-000	COVER, DYNAMO	1		
• NEUTRAL SWITCH CONTACT ASSY.		5	11691-028-000	GASKET, DYNAMO COVER	1		
L. CRANKCASE REAR COVER	0.1	6	31100-053-013	A.C. GENERATOR ASSY. (KOKUSAN)	1		
• DYNAMO COVER		7	31100-053-014	A.C. GENERATOR ASSY. (ND)	1		
		8	31101-053-003	ROTOR COMP. (KOKUSAN)	1		
		9	31101-053-004	ROTOR COMP. (ND)	1		
		10	31102-046-014	STATOR COMP. (ND)	1		
			31102-046-023	STATOR COMP. (KOKUSAN)	1		
			31104-128-004	BOLT, GENERATOR ROTOR SETTING (ND)	1		
			95015-11100	BOLT A1, ROTOR	1		
			31105-028-000	WASHER, ROTOR SETTING	1		
			31105-128-004	WASHER, GENERATOR ROTOR SETTING (ND)	1		
		11	32981-121-003	GROMMET, NEUTRAL SWITCH CORD	1		
		12	35750-028-000	CONTACT ASSY., NEUTRAL SWITCH	1		
		13	35752-028-300	SPEACER, NEUTRAL SWITCH	1		
		14	90141-028-000	SCREW, PAN, 6X18	3		
		15	91301-216-000	O-RING, 5.5X1.5	3		
		16	92000-06025	BOLT, HEX., 6X25	3		
		17	93500-06020	SCREW, PAN, 6X20	1		
		18	93500-06025	SCREW, PAN, 6X25	7		
		19	93500-06032	SCREW, PAN, 6X32	2		
		20	93500-06035	SCREW, PAN, 6X35	1		
1977.01.20					C12		

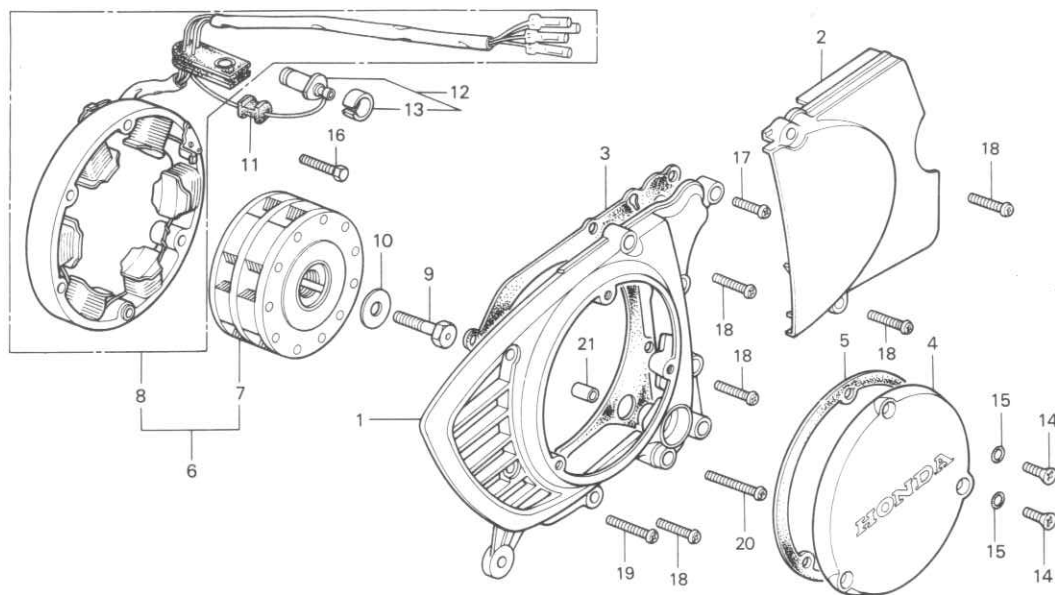
C 13

Block No.

E-8

Left Crankcase Cover •

A.C. Generator



8096-52

Service Item	F.R.T.	Ref. No.	Part No.	Description	Reqd. No. C90K3	Serial No.	Area Code
		21	94301-10140	PIN A, DOWEL, 10X14	1		

1977.01.20

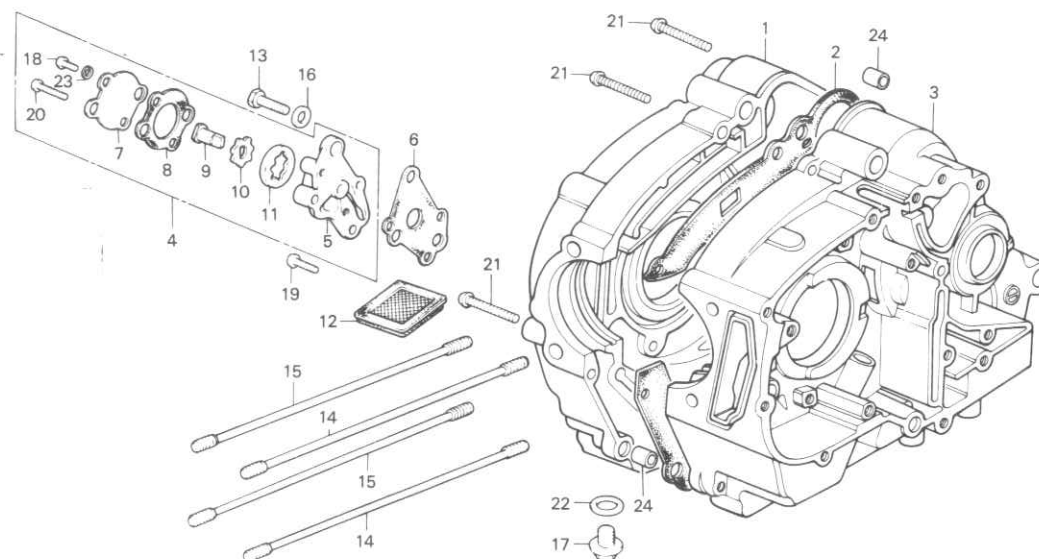
C13

C 14

Block No.

E-9

Crankcase • Oil Pump



B046-93

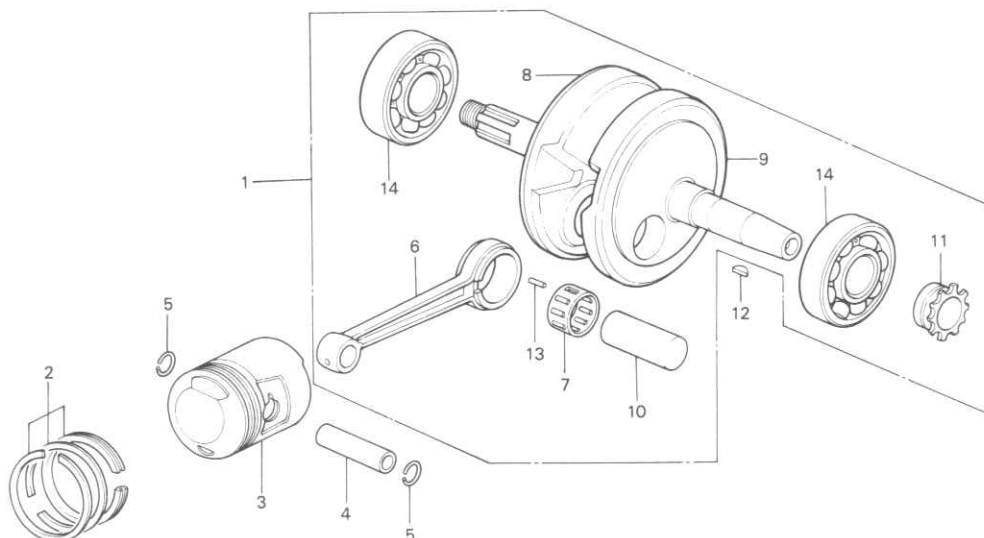
Service Item	F.R.T.	Ref. No.	Part No.	Description	Reqd. No. C90K3	Serial No.	Area Code
L. CRANKCASE	*4.3	1	11100-121-690	CRANKCASE, R.	1		
R. CRANKCASE	*3.7	2	11191-052-000	GASKET, CRANKCASE	1		
CRANKCASE GASKET	*3.3	3	11200-096-700	CRANKCASE, L.	1		
CYLINDER STUD BOLT	1.4	4	15100-053-010	PUMP ASSY., OIL	1		
* Add 0.1		5	15111-053-020	BODY, OIL PUMP	1		
OIL PUMP ASSY. and its related parts	0.7	6	15119-028-030	GASKET, OIL PUMP BODY	1		
OIL FILTER SCREEN	0.6	7	15121-028-060	COVER, OIL PUMP SIDE	1		
		8	15128-028-030	GASKET, OIL PUMP COVER	1		
		9	15181-028-050	SHAFT, OIL PUMP DRIVE	1		
		10	15331-053-010	ROTOR, OIL PUMP INNER	1		
		11	15332-053-010	ROTOR, OIL PUMP OUTER	1		
		12	15421-035-010	SCREEN, OIL FILTER	1		
		13	90015-028-000	BOLT, OIL JOINT	1		
		14	90031-028-010	BOLT A, CYLINDER STUD	2		
		15	90032-028-020	BOLT B, CYLINDER STUD	2		
		16	90405-001-000	PACKING, OIL PIPE	1		
		17	92800-12000	BOLT, DRAIN PLUG, 12MM	1		
		18	93500-05012-0A	SCREW, PAN, 5X12	2		
		19	93500-06016	SCREW, PAN, 6X16	1		
		20	93500-06025	SCREW, PAN, 6X25	2		
		21	93500-06040	SCREW, PAN, 6X40	9		
		22	94109-12000	WASHER, DRAIN PLUG, 12MM	1		
		23	94111-05000	WASHER, SPRING, 5MM	2		
		24	94301-10140	PIN A, DOWEL, 10X14	2		
1977.01.20				C14			

C 15

Block No.

E-10

**Crankshaft •
Piston**



B096-55

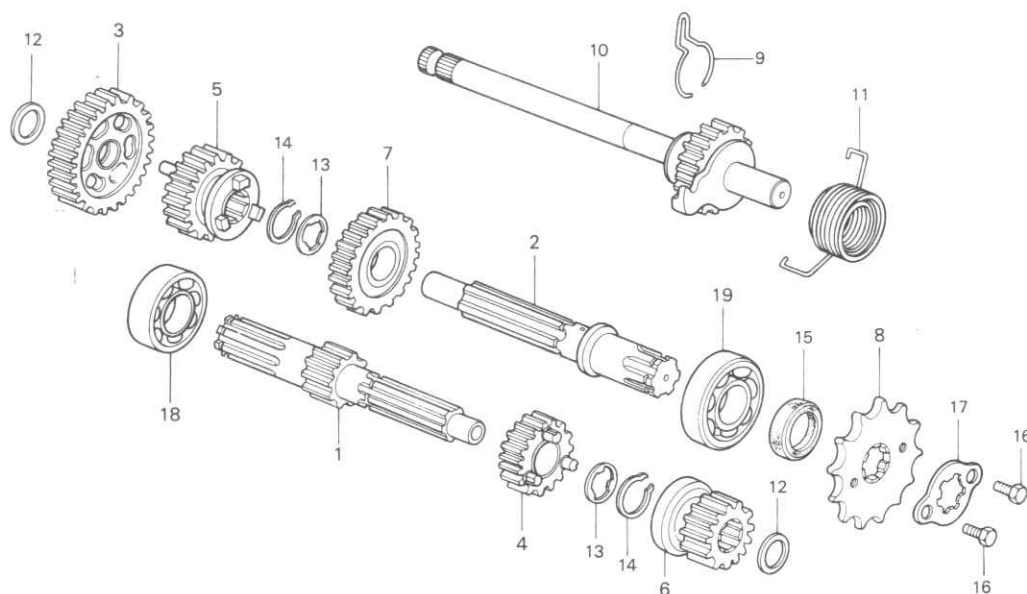
Service Item	F.R.T.	Ref. No.	Part No.	Description	Reqd. No. C90K3	Serial No.	Area Code
CONNECTING ROD and its related parts	*	1	13000-028-040	CRANKSHAFT ASSY.	1		
★ Actually required time		2	13010-028-014	RING SET, PISTON (STD. RIKEN)	1		
CRANKSHAFT ASSY.	※3.8		13010-028-025	RING SET, PISTON (STD. TEIKOKU)	1		
PISTON/PISTON RINGS	1.5		13020-028-014	RING SET, PISTON (0.25 RIKEN)	(1)		
PISTON PIN	1.4		13020-028-025	RING SET, PISTON (0.25TEIKOKU)	(1)		
			13030-028-014	RING SET, PISTON (0.50 RIKEN)	(1)		
			13030-028-025	RING SET, PISTON (0.50 TEIKOKU)	(1)		
			13040-028-014	RING SET, PISTON (0.75 RIKEN)	(1)		
			13040-028-025	RING SET, PISTON (0.75TEIKOKU)	(1)		
			13050-028-014	RING SET, PISTON (1.00 RIKEN)	(1)		
			13050-028-025	RING SET, PISTON (1.00TEIKOKU)	(1)		
		3	13101-028-070	PISTON (STD.)	1		
			13102-028-070	PISTON (0.25)	(1)		
			13103-028-070	PISTON (0.50)	(1)		
			13104-028-070	PISTON (0.75)	(1)		
			13105-028-070	PISTON (1.00)	(1)		
		4	13111-028-000	PIN, PISTON	1		
		5	13115-200-000	CLIP, PISTON PIN	2		
		6	13201-028-010	ROD, CONNECTING	1		
		7	13211-235-000	RETAINER, ROLLER	1		
		8	13310-028-070	CRANKSHAFT COMP., R.	1		
		9	13321-028-060	CRANKSHAFT COMP., L.	1		
		10	13381-028-000	PIN, CRANK	1		
		11	14311-028-010	SPROCKET, TIMING (15T)	1		
		12	90741-253-000	KEY, WOODRUFF, 4MM	1		
		13	91101-001-030	ROLLER, ROD, 2.5X10	26		
		14	96100-63050	BEARING, RADIAL BALL, 6305	2		
			1977.01.20		C15		



Block No.

E-11

Transmission



B096-56

Service Item	F.R.T.	Ref. No.	Part No.	Description	Reqd. No. C90K3	Serial No.	Area Code
TRANSMISSION MAIN SHAFT and its related parts	☆3.5	1	23211-096-000	SHAFT, TRANSMISSION MAIN (13T)	1		
• TRANSMISSION COUNTER SHAFT and its related parts		2	23221-046-020	SHAFT, TRANSMISSION COUNTER (23T)	1		
* One motorcycle ☆3.7 at transmission		3	23421-096-000	GEAR COMP., COUNTER SHAFT LOW (33T)	1		
KICK STARTER SPINDLE and its related parts	☆3.4	4	23431-096-000	GEAR, MAIN SHAFT SECOND (18T)	1		
DRIVE SPROCKET	0.2	5	23441-096-010	GEAR, COUNTER SHAFT SECOND	1		
		6	23471-096-000	GEAR, MAIN SHAFT TOP (23T)	1		
		7	23481-096-000	GEAR, COUNTER SHAFT TOP (23T)	1		
		8	23801-046-000	SPROCKET, DRIVE (14T)	1		
		9	28223-035-035	SPRING, KICK STARTER RATCHET	1		
		10	28250-028-010	SPINDLE, KICK STARTER	1		
		11	28261-028-010	SPRING, KICK STARTER	1		
		12	90451-121-000	WASHER, THRUST, 14MM	2		
		13	90461-028-000	WASHER, SPLINE, 18MM	2		
		14	90601-030-000	CIR CLIP, 18MM	2		
		15	91201-030-000	OIL SEAL, 20X34X7	1		
		16	92000-06010	BOLT, HEX., 6X10	2		
		17	95014-92100	PLATE B, FIXING	1		
		18	96100-60040	BEARING, RADIAL BALL, 6004	1		
		19	96100-62040	BEARING, RADIAL BALL, 6204	1		

1977.01.20

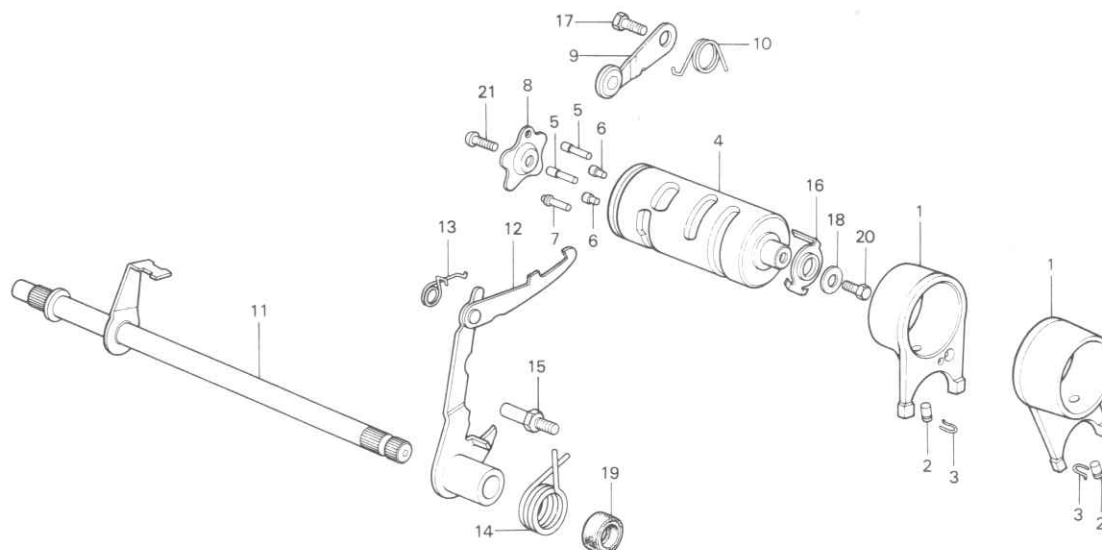
C16



Block No.

E-12

Gearshift



B096-57

Service Item	F.R.T.	Ref. No.	Part No.	Description	Reqd. No. C90K3	Serial No.	Area Code
GEAR SHIFT FORK/GEAR SHIFT DRUM and those related parts	3.5	1	24211-046-315	FORK, GEAR SHIFT	2		
		2	24261-028-010	PIN, GEARSHIFT FORK GUIDE	2		
GEAR SHIFT SPINDLE/SHIFT DRUM STOPPER and those related parts	0.8	3	24263-028-000	CLIP, GEARSHIFT FORK GUIDE PIN	2		
11.6 x 24 x 10 OIL SEAL	0.4	4	24301-046-020	DRUM, GEAR SHIFT	1		
		5	24421-001-010	PIN A, GEAR SHIFT DRUM	2		
		6	24422-001-000	PIN B, GEAR SHIFT DRUM	2		
		7	24423-028-000	PIN C, GEAR SHIFT DRUM	1		
		8	24425-028-000	PLATE, GEAR SHIFT DRUM SIDE	1		
		9	24430-096-700	STOPPER, GEAR SHIFT DRUM	1		
		10	24435-046-000	SPRING, SHIFT DRUM STOPPER	1		
		11	24610-046-020	SPINDLE COMP., GEAR SHIFT	1		
		12	24630-046-010	ARM, GEAR SHIFT	1		
		13	24641-046-000	SPRING, GEAR SHIFT ARM	1		
		14	24651-033-010	SPRING, GEAR SHIFT RETURN	1		
		15	24652-035-000	PIN, SHIFT RETURN SPRING	1		
		16	35753-028-601	ROTOR, NEUTRAL SWITCH	1		
		17	90023-001-010	PIVOT, SHIFT DRUM STOPPER ARM	1		
		18	90417-041-000	WASHER, SHIFT DRUM SIDE	1		
		19	91204-121-000	OIL SEAL, 11.6X24X10	1		
			91204-121-005	OIL SEAL, 11.6X24X10	1		
		20	92000-06016	BOLT, HEX., 6X16	1		
		21	93500-06012	SCREW, PAN, 6X12	1		

1977.01.20

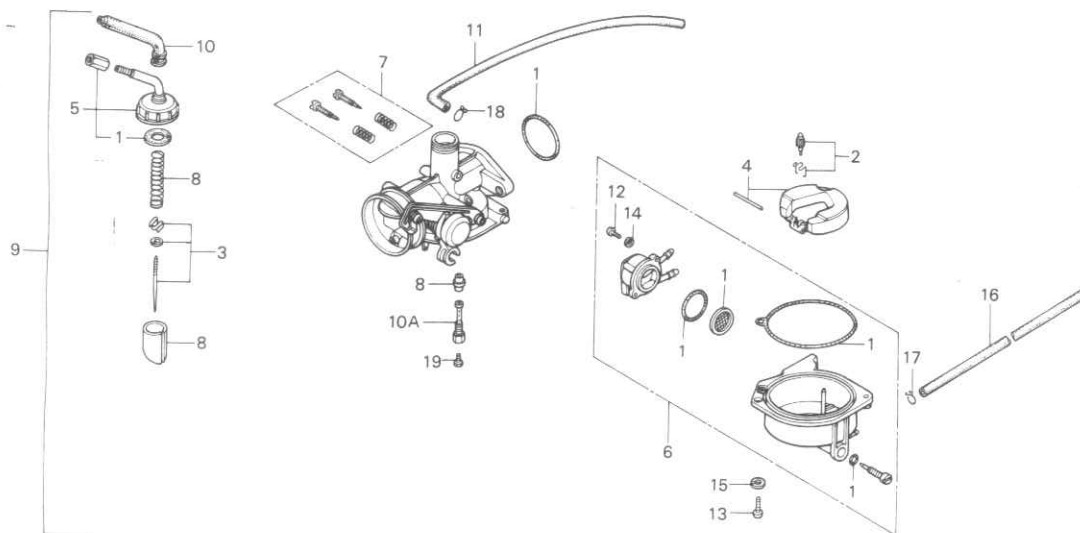
D1



Block No.

E-13

Carburetor



B086-101

Service Item	F.R.T.	Ref. No.	Part No.	Description	Reqd. No. C90K3	Serial No.	Area Code
CARBURETOR ASSY.	0.5	1	16010-096-720	PACKING SET	1		
PACKING SET	0.7	2	16011-143-620	VALVE SET, FLOAT	1		
JET NEEDLE SET	0.6	3	16012-096-720	NEEDLE SET, JET	1		
FLOAT VALVE SET/FLOAT SET	0.5	4	16013-124-760	FLOAT SET	1		
• MAIN JET		5	16014-130-640	TOP SET	1		
THROTTLE VALVE SET	0.4	6	16015-086-700	CHAMBER SET, FLOAT	1		
• FLOAT CHAMBER SET		7	16016-086-700	SCREW SET	1		
TOP SET	0.3	8	16022-096-720	VALVE SET, THROTTLE	1		
		9	16100-096-723	CARBURETOR ASSY.	1		
		10	16118-121-014	CAP, CABLE SEALING	1		
		10A	16165-096-720	HOLDER, NEEDLE JET	1		
		11	16199-092-700	TUBE, FUEL	1		
		12	93500-03012-0H	SCREW, PAN, 3X12	1		
		13	93500-04014-0H	SCREW, PAN, 4X14	1		
		14	94111-03000	WASHER, SPRING, 3MM	1		
		15	94111-04000	WASHER, SPRING, 4MM	1		
		16	95001-35270-40	TUBE, FUEL, 3.5X270	1		
		17	95002-02070	CLIP B7, TUBE	1		
		18	95002-02650	CLIP B6.5, TUBE	1		
		19	99101-116-0780	JET, MAIN, #78	1		

1977.01.20

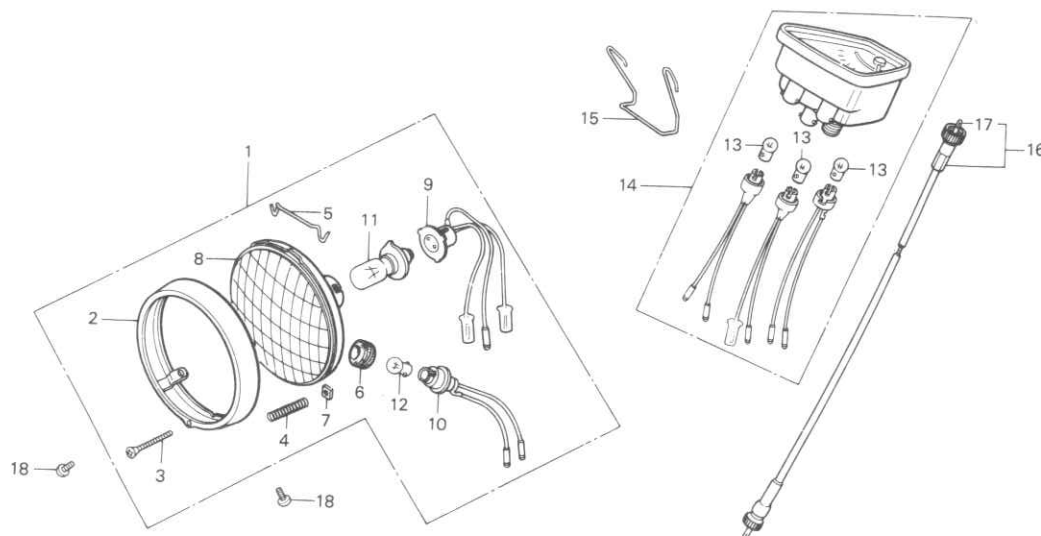
D2



Block No.

F-1

**Headlight •
Speedometer**



B086-63A

Service Item	F.R.T.	Ref. No.	Part No.	Description	Reqd. No. C90K3	Serial No.	Area Code
HEAD LIGHT UNIT and its related parts	0.2	1	33100-086-711	LIGHT ASSY., HEAD	1		
• SPEEDOMETER ASSY.		2	33101-041-023	RIM, HEADLIHGT (STANLEY)	1		
• SPEEDOMETER CABLE ASSY.		3	33102-086-003	SCREW, BEAM ADJUST (STANLEY)	1		
HEAD LIGHT ASSY./BULB	0.1	4	33107-030-003	SPRING, BEAM ADJUST (STANLEY)	1		
• SPEEDOMETER INNER CABLE		5	33109-087-003	SPRING, HEADLIGHT UNIT HOLDER	1		
• POSITION SOCKET ASSY.		6	33111-088-000	RUBBER, SOCKET	1		
		7	33117-041-003	NUT, BEAM ADJUSTING (STANLEY)	1		
		8	33120-086-711	UNIT, HEAD LIGHT	1		
		9	33130-028-013	SOCKET COMP., HEAD LIGHT	1		
		10	33135-086-003	SOCKET ASSY., POSITION	1		
		11	34901-030-003	BULB, HEAD LIGHT (6V25/25W)	1		
		12	34903-046-751	BULB, POSITION LAMP (6V5W)	1		
		13	34908-230-000	BULB, SPEEDOMETER (6V 1.7W)	3		
		14	37200-096-721	SPEEDOMETER ASSY. (KPH)	1		DK,U
			37200-096-731	SPEEDOMETER ASSY. (MPH)	1		DM
		15	37244-086-000	SPRING, SPEEDOMETER SETTING	1		
		16	44830-090-600	CABLE ASSY., SPEEDOMETER.	1		
		17	44831-086-720	CABLE, SPEEDOMETER INNER	1		
		18	90101-087-720	SCREW, HEADLIGHT SETTING	2		

1977.01.20

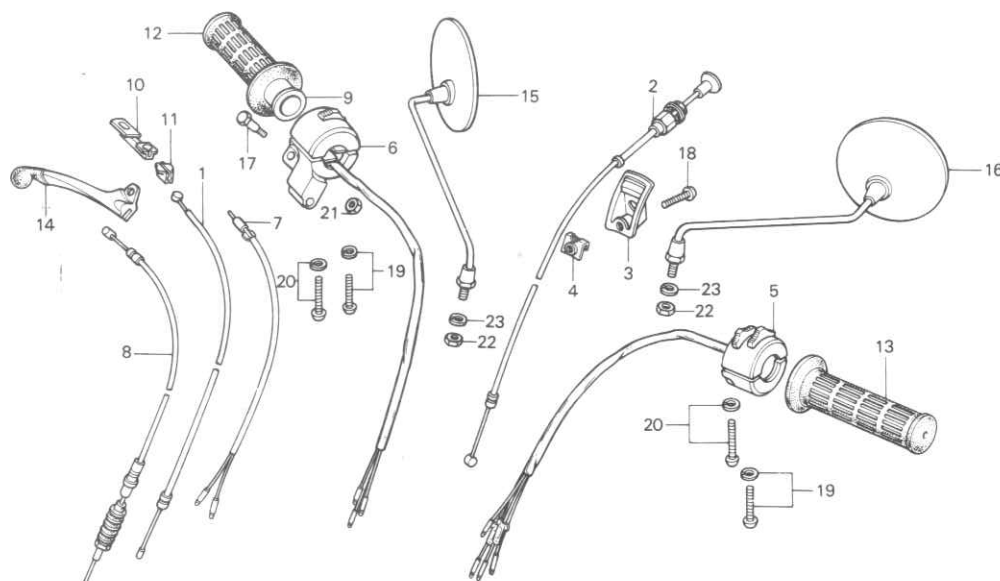
G2



Block No.

F-2

**Handle Switch •
Lever • Cable**



B086-102

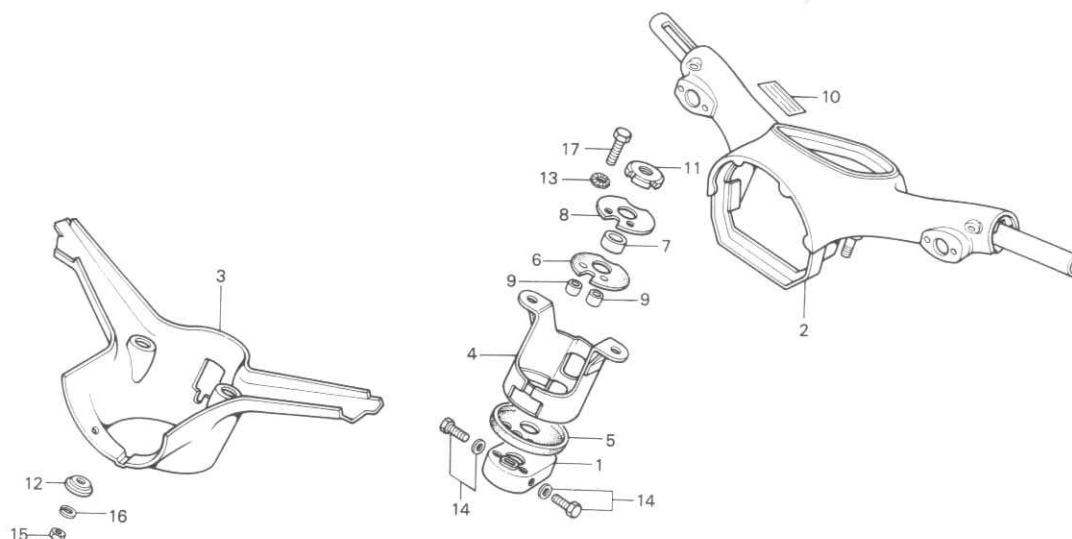
Service Item	F.R.T.	Ref. No.	Part No.	Description	Reqd. No. C90K3	Serial No.	Area Code
R. HANDLE SWITCH ASSY.	0.5	1	17910-096-720	CABLE COMP., THROTTLE	1		
• L. HANDLE SWITCH ASSY.		2	17950-046-790	CABLE COMP., CHOKE	1		
• THROTTLE CABLE COMP.		3	17965-086-720	HOLDER COMP., CHOKE WIRE	1		
FRONT BRAKE CABLE	0.3	4	17966-086-720	PLATE, CHOKE HOLDER SETTING	1		
• FRONT STOP SWITCH ASSY.		5	35150-086-711	SWITCH ASSY., LIGHTING	1		
• CHOKE CABLE COMP.		6	35200-086-721	SWITCH ASSY., WINKER	1		
THROTTLE GRIP PIPE and its related parts	0.2	7	35340-086-721	SWITCH COMP., FR. STOP	1		
GRIP RUBBER	0.1	8	45450-096-651	CABLE COMP., FR. BRAKE	1		U
• STEERING HANDLE LEVER			45450-096-700	CABLE COMP., FR. BRAKE	1		DK,DM
• BACK MIRROR		9	53141-034-000	PIPE, THROTTLE GRIP	1		
* One or all at back mirror		10	53161-033-000	HINGE, THROTTLE WIRE	1		
		11	53162-001-020	HOLDER, THROTTLE WIRE OUTER	1		
		12	53165-041-000	RUBBER, R. GRIP	1		
		13	53166-041-000	RUBBER, L. GRIP	1		
		14	53175-096-650	LEVER, R. STEERING HANDLE	1		
		15	88110-086-020	MIRROR, R. BACK	1		DK,DM
			88110-092-620	MIRROR, R. BACK	1		U
		16	88120-086-812	MIRROR, L. BACK	1		DK,DM
			88120-092-620	MIRROR, L. BACK	1		U
		17	90114-001-000	SCREW, HANDLE LEVER PIVOT	1		
		18	93500-06012	SCREW, PAN, 6X12	1		
		19	93892-05020-10	SCREW-WASHER, 5X20	3		
		20	93892-05032-10	SCREW-WASHER, 5X32	1		
		21	94001-06000	NUT, HEX., 6MM	1		
		22	94001-08000-0S	NUT, HEX., 8MM	2		
		23	94111-08000	WASHER, SPRING, 8MM	2		
1977.01.20					G3		



Block No.

F-3

**Steering Handle •
Top Bridge**



B086-103

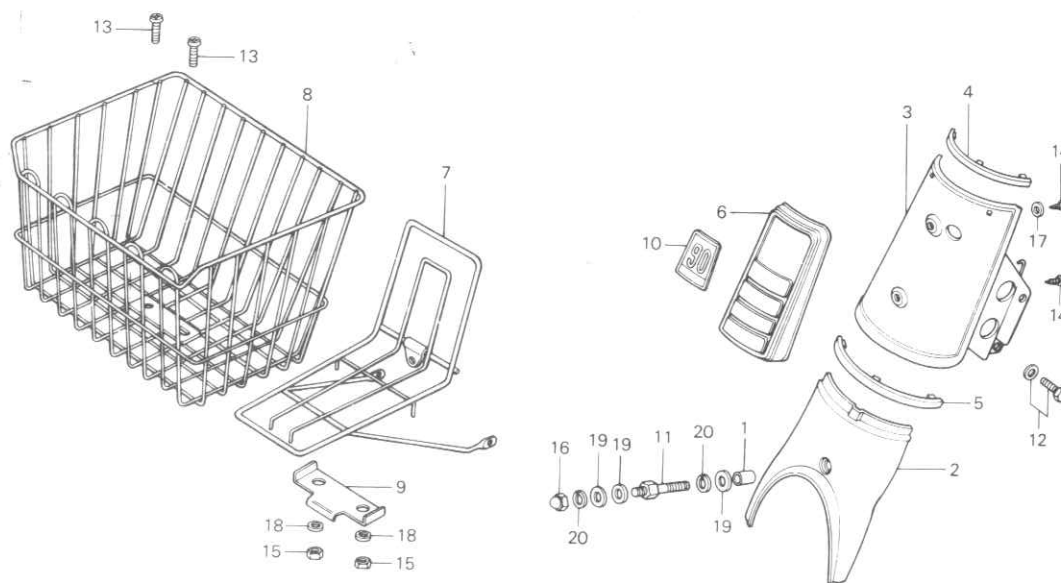
Service Item	F.R.T.	Ref. No.	Part No.	Description	Reqd. No. C90K3	Serial No.	Area Code
STEERING HANDLE COMP. FORK TOP BRIDGE PLATE/ HANDLE UNDER COVER and those related parts	1.5	1	51102-086-720	PLATE, FORK TOP	1		
		2	53100-086-010AW	HANDLE COMP., STEERING	1		
			53100-086-010UL	HANDLE COMP., STEERING	1		
	0.8	3	53120-086-720ZB	COVER, HANDLE UNDER *B-5M*	1		
			53120-086-720ZE	COVER, HANDLE UNDER *R-8*	1		
		4	53231-086-720	PLATE, FORK TOP BRIDGE	1		
		5	53232-086-720	RUBBER A, TOP BRIDGE SEAT	1		
		6	53233-086-000	SEAT B, TOP BRIDGE RUBBER	1		
		7	53234-086-000	COLLAR, STEERING STEM	1		
		8	53235-086-000	WASHER, TOP BRIDGE	1		
		9	53236-086-000	COLLAR, TOP BRIDGE	2		
		10	87560-323-670A	MARK, DRIVE CAUTION	1		
			87560-323-670B	MARK, DRIVE CAUTION	1		
		11	90304-030-000	NUT, STEERING HEAD STEM	1		
		12	90518-086-000	WASHER, HANDLE SETTING	2		
		13	90552-001-000	WASHER, TOOTHED	2		
		14	93481-08016-00	BOLT-WASHER, 8X16	2		
		15	94001-08000-0S	NUT, HEX., 8MM	2		
		16	94111-08000	WASHER, SPRING, 8MM	2		
		17	95300-08028	BOLT, HEX., 8X28	2		
1977.01.20				G4			



Block No.

F-4

**Top Cover •
Front Carrier**



B096-59

Service Item	F.R.T.	Ref. No.	Part No.	Description	Reqd. No. C90K3	Serial No.	Area Code
FRONT TOP COVER	0.3	1	53236-086-000	COLLAR, TOP BRIDGE	1		
FRONT TOP COVER MASK	0.2	2	61150-086-020AW	COVER, FORK CENTER	1		
FORK CENTER COVER	0.1		61150-086-020UL	COVER, FORK CENTER	1		
• FRONT CARRIER/FRONT BASKET		3	64310-096-700ZA	COVER, FR. TOP *B-5M*	1		
			64310-096-700ZB	COVER, FR. TOP *R-8*	1		
		4	64320-086-300	ORNAMENT, TOP COVER UPPER	1		
		5	64321-086-300	ORNAMENT, TOP COVER UNDER	1		
		6	64330-086-000	MASK, FR. TOP COVER	1		
		7	81100-086-010	CARRIER, FR.	1		
		8	81311-086-810	BASKET, FR.	(1)		
		9	81312-086-810	PLATE, BASKET CLAMP	(1)		
		10	87105-096-700	EMBLEM, FR. TOP COVER	1		
		11	90101-086-010	BOLT, FR. CARRIER SETTING	1		
		12	93481-06012-00	BOLT-WASHER, 6X12	2		
		13	93500-06020	SCREW, PAN, 6X20	(2)		
		14	93901-24010	SCREW, TAPPING, 4X6	2		
		15	94001-06000	NUT, HEX., 6MM	(2)		
		16	94021-08000-0S	NUT, CAP, 8MM	1		
		17	94101-04000	WASHER, PLAIN, 4MM	1		
		18	94101-06000	WASHER, PLAIN, 6MM	(2)		
		19	94101-08000	WASHER, PLAIN, 8MM	3		
		20	94111-08000	WASHER, SPRING, 8MM	2		

1977.01.20

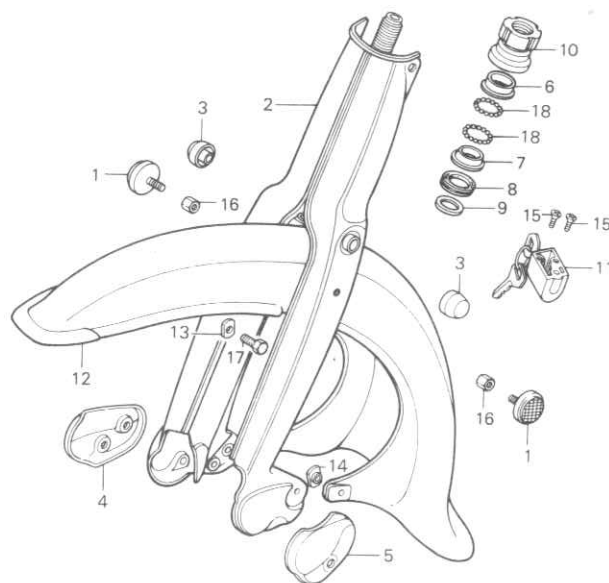
G5



Block No.

F-5

**Front Fork •
Front Fender**



B096--60

Service Item	F.R.T.	Ref. No.	Part No.	Description	Reqd. No. C90K3	Serial No.	Area Code
FRONT FORK COMP.	1.8	1	33740-092-003	REFLEX REFLECTOR, FR.	2		
STEERING BOTTOM CONE RACE		2	51100-086-030AW	FORK COMP., FR.	1		
and its related parts	1.1		51100-086-030UL	FORK COMP., FR.	1		
STEERING HEAD TOP THREAD COMP.		3	51341-001-000WF	CAP, FR. FORK SIDE	2		
and its related parts	0.9		51344-046-750XW	COVER, R. FR. FORK UNDER	1		
FRONT FENDER	0.4		51345-046-750XW	COVER, L. FR. FORK UNDER	1		
STEERING HANDLE LOCK COMP.	0.3	6	53211-030-000	RACE, STEERING TOP CONE	1		
FRONT REFLEX REFLECTOR	0.1	7	53212-030-000	RACE, STEERING BOTTOM CONE	1		
• FRONT FORK UNDER COVER		8	53214-001-010	DUST SEAL, STEERING HEAD	1		
* One or all		9	53215-001-000	WASHER, STEERING HEAD DUST	1		
				SEAL			
		10	53220-041-010	THREAD COMP., STEERING HEAD	1		
				TOP			
		11	53600-086-007	LOCK, STEERING HANDLE	1		
		12	61100-086-000AW	FENDER COMP., FR.	1		
			61100-086-000UL	FENDER COMP., FR.	1		
		13	61117-041-010	METAL, FR. FENDER UPPER FIXING	2		
		14	61142-001-000	METAL, FR. FENDER UNDER FIXING	2		
		15	90164-028-000	SCREW, U LOCK FLAT, 6X12	2		
		16	90301-086-000	NUT, LOCK, 6MM	2		
		17	92000-06016	BOLT, HEX., 6X16	2		
		18	96211-06000	BALL, STEEL, #6 (3/16)	42		

1977.01.20

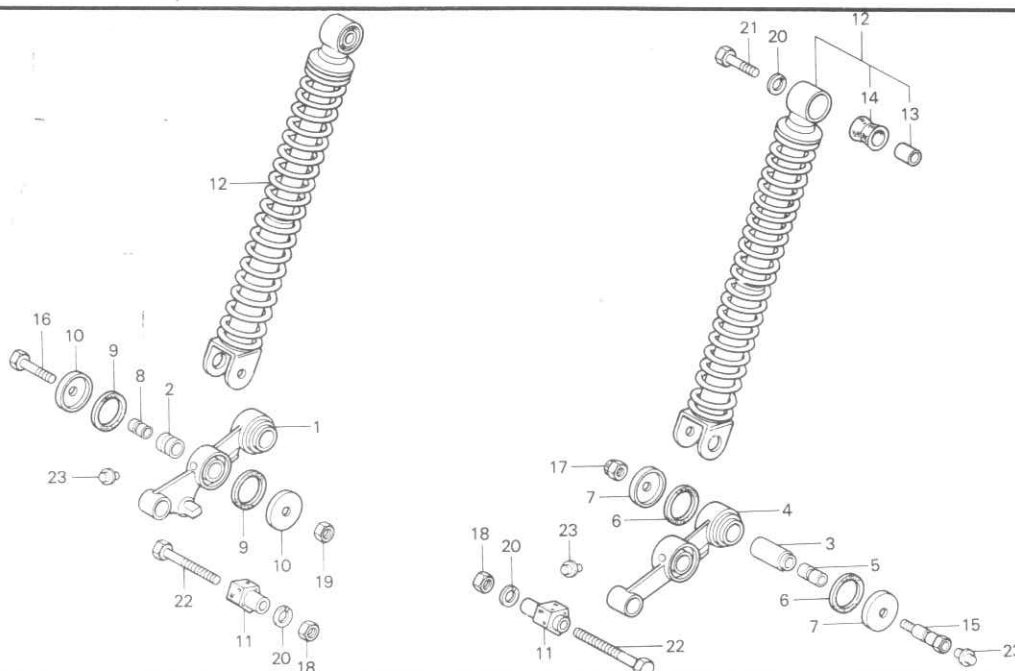
G6



Block No.

F-6

Front Cushion



B086-68

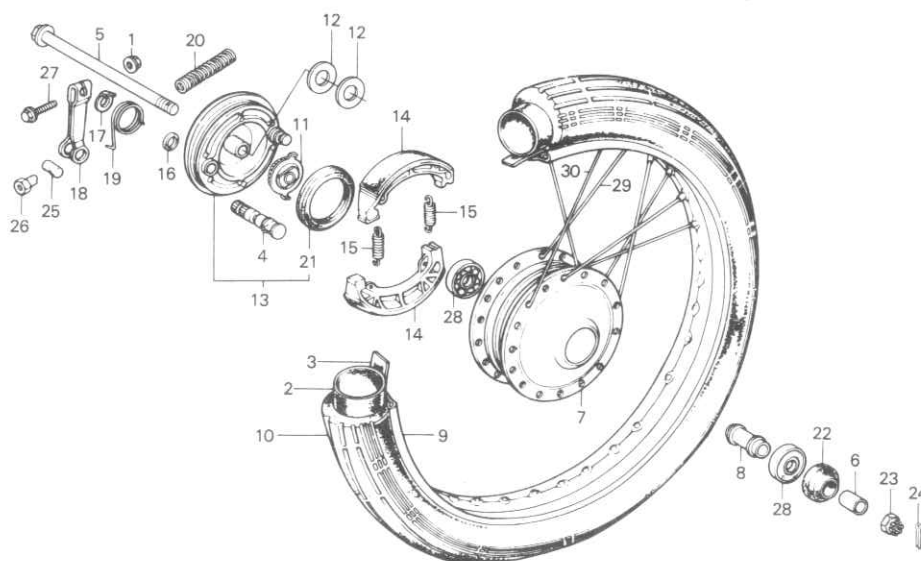
Service Item	F.R.T.	Ref. No.	Part No.	Description	Reqd. No. C90K3	Serial No.	Area Code
FRONT CUSHION ASSY./ FRONT SUSPENSION ARM and those related parts * One motorcycle at 1.0	0.6	1	51310-046-010	ARM, R. FR. SUSPENSION	1		
		2	51311-041-006	BUSH, FR. CUSHION UNDER	2		
		3	51312-041-006	BUSH, FR. ARM PIVOT	2		
		4	51320-096-650	ARM, L. FR. SUSPENSION	1		
		5	51331-041-000	COLLAR, FR. ARM PIVOT	2		
		6	51332-001-000	DUST SEAL, FR. ARM PIVOT	4		
		7	51333-001-000	CAP, FR. ARM PIVOT DUST SEAL	4		
		8	51334-041-000	COLLAR, FR. CUSHION UNDER	2		
		9	51335-001-000	DUST SEAL, FR. CUSHION UNDER	4		
		10	51336-001-000	CAP, FR. CUSHION UNDER DUST SEAL	4		
		11	51351-041-010	STOPPER, FR. ARM REBOUND	2		
		12	51400-096-003	CUSHION ASSY., FR. (SHOWA)	2		
			51400-096-702	CUSHION ASSY., FR.	2		
		13	51486-086-000	COLLAR, RUBBER BUSH	2		
		14	51489-086-000	BUSH, RUBBER	2		
		15	90125-041-000	BOLT, FR. ARM PIVOT	2		
		16	90149-041-010	BOLT, FR. CUSHION UNDER	2		
		17	90349-001-000	NUT, SELF LOCK, 8MM	2		
		18	94001-08000-0S	NUT, HEX., 8MM	2		
		19	94002-08000-0S	NUT, HEX., 8MM	2		
		20	94111-08000	WASHER, SPRING, 8MM	4		
		21	95300-08032	BOLT, HEX., 8X32	2		
		22	95300-08050	BOLT, HEX., 8X50	2		
		23	96201-30000	NIPPLE, GREASE, A.45	4		
1977.01.20					67		



Block No.

F-7

**Front Wheel •
Panel**



B046-83A

Service Item	F.R.T.	Ref. No.	Part No.	Description	Reqd. No. C90K3	Serial No.	Area Code
FRONT WHEEL HUB COMP.	2.6	1	18362-720-000	NUT, FLANGE, 6MM	1		
FRONT WHEEL RIM	2.2	2	42712-041-006	TUBE, TIRE (NITTO)	1		
FRONT WHEEL TIRE/TUBE/TUBE FLAP	0.9		42712-052-009	TUBE, TIRE (YOKOHAMA)	1		
FRONT BRAKE PANEL and its related parts	0.4	3	42713-102-006	FLAP, TIRE (17 NITTO)	1		
• FRONT AXLE DISTANCE COLLAR/ BALL BEARING			42713-102-009	FLAP, TIRE (YOKOHAMA)	1		
* Add 0.1 at ball bearing		4	43141-400-000	CAM, RR. BRAKE	1		
SPEEDOMETER GEAR	0.3	5	44301-096-650	AXLE, FR. WHEEL	1		
FRONT WHEEL AXLE and its related parts	0.2	6	44311-046-000	COLLAR, FR. WHEEL SIDE	1		
FRONT BRAKE ARM and its related parts	0.1	7	44601-150-000	HUB, FR. WHEEL	1		
		8	44620-400-000	COLLAR, FR. AXLE DISTANCE	1		
		9	44701-030-003	RIM, FR. WHEEL (17)(DAIDO)	1		
		10	44711-052-006	TIRE, FR. (2.50-17-4PR NITTO)	1		
			44711-052-009	TIRE, FR. WHEEL (2.50-17 YOKOHAMA)	1		
		11	44804-096-650	GEAR COMP., SPEEDOMETER	1		
		12	44808-107-720	WASHER, SPEEDOMETER GEAR	2		
		13	45010-096-700	PANEL COMP., FR. SUB	1		
		14	45120-096-651	SHOE COMP., BRAKE (NIPPON)	2		
			45120-096-652	SHOE COMP., BRAKE (ASAHI)	2		
		15	45133-028-000	SPRING, FR. BRAKE SHOE	2		
		16	45134-250-000	DUST SEAL, BRAKE CAM	1		
		17	45145-096-650	INDICATOR, FR. BRAKE	1		
		18	45410-096-650	ARM, FR. BRAKE	1		
		19	45411-087-820	SPRING, FR. BRAKE ARM RETURN	1		
		20	45437-001-000	SPRING, FR. BRAKE ARM	1		
		21	91251-121-000	OIL SEAL, 47X60X7	1		

1977.01.20

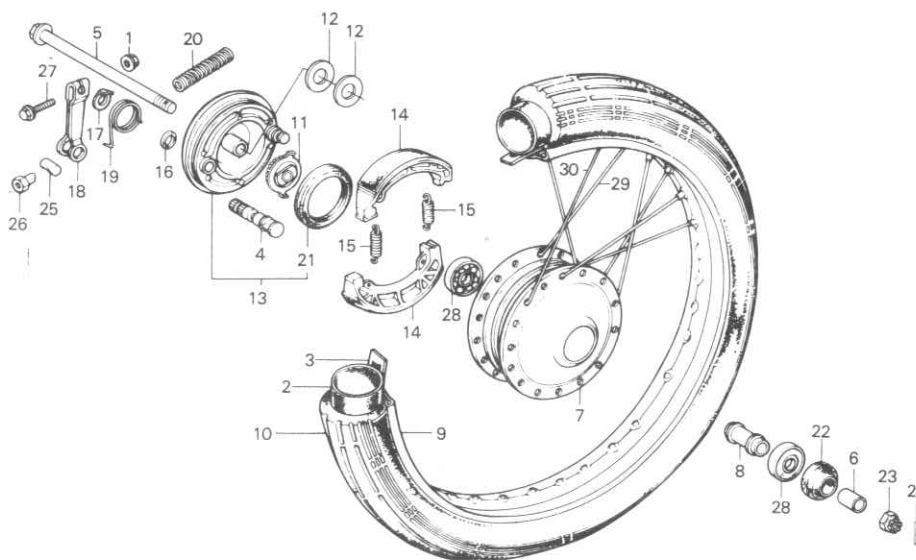
G8



Block No.

F-7

**Front Wheel •
Panel**



B046-83A

Service Item	F.R.T.	Ref. No.	Part No.	Description	Reqd. No. C90K3	Serial No.	Area Code
		22	91252-030-003	OIL SEAL, 23X37X7	1		
			91252-030-005	OIL SEAL, 23X37X7	1		
		23	94011-12000-0S	NUT, CASTLE, 12MM	1		
		24	94201-30250	PIN, SPLIT, 3.0X25	1		
		25	95015-32001	JOINT B, BRAKE ARM	1		
		26	95015-42000	NUT B, BRAKE ROD ADJUST	1		
		27	95700-06028-00	BOLT, FLANGE, 6X28	1		
		28	96140-63010-10	BEARING, RADIAL BALL, 6301U	2		
		29	97145-21159-10	SPOKE A, 12X159.5 (INSIDE)	18		
		30	97520-21158-10	SPOKE A, 12X159 (OUTSIDE)	18		

1977.01.20

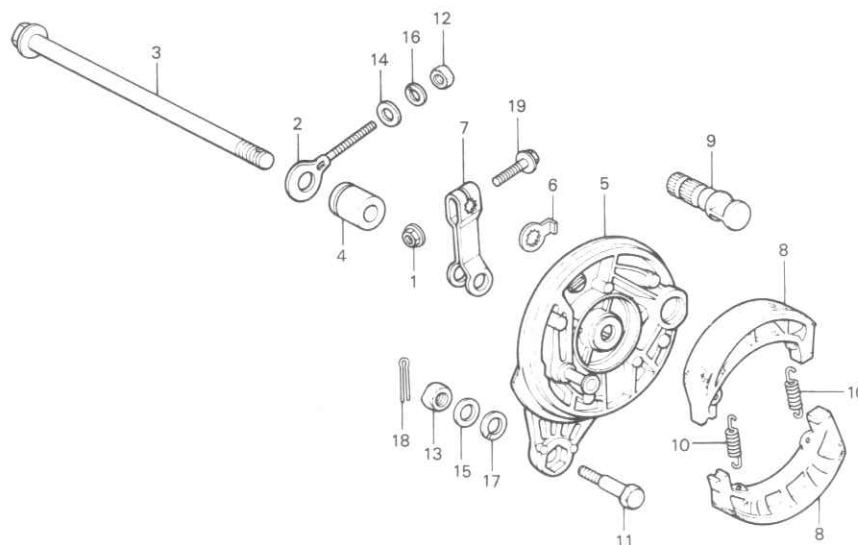
G9



Block No.

F-8

Rear Brake Panel



8086-107

Service Item	F.R.T.	Ref. No.	Part No.	Description	Reqd. No. C90K3	Serial No.	Area Code
REAR BRAKE PANEL and its related parts	0.5	1	18362-720-000	NUT, FLANGE, 6MM	1		
REAR WHEEL AXLE and its related parts	0.2	2	40543-035-000	ADJUSTER, R. DRIVE CHAIN	1		
REAR BRAKE ARM and its related parts	0.1	3	42301-041-030	AXLE, RR. WHEEL	1		
		4	42313-041-000	COLLAR, RR. BRAKE PANEL SIDE	1		
		5	43100-096-700	PANEL, RR. BRAKE	1		
		6	43145-096-700	INDICATOR, RR. BRAKE	1		
		7	43410-096-700	ARM, RR. BRAKE	1		
		8	45120-096-651	SHOE COMP., BRAKE (NIPPON)	2		
			45120-096-652	SHOE COMP., BRAKE (ASAHI)	2		
		9	45131-400-000	CAM, FR. BRAKE	1		
		10	45133-028-000	SPRING, FR. BRAKE SHOE	2		
		11	90127-400-000	BOLT, RR. BRAKE STOPPER	1		
		12	94001-06000	NUT, HEX., 6MM	1		
		13	94001-08000-0S	NUT, HEX., 8MM	1		
		14	94101-06000	WASHER, PLAIN, 6MM	1		
		15	94101-08000	WASHER, PLAIN, 8MM	1		
		16	94111-06000	WASHER, SPRING, 6MM	1		
		17	94111-10000	WASHER, SPRING, 10MM	1		
		18	94201-20150	PIN, SPLIT, 2.0X15	1		
		19	95700-06032-00	BOLT, FLANGE, 6X32	1		

1977.01.20

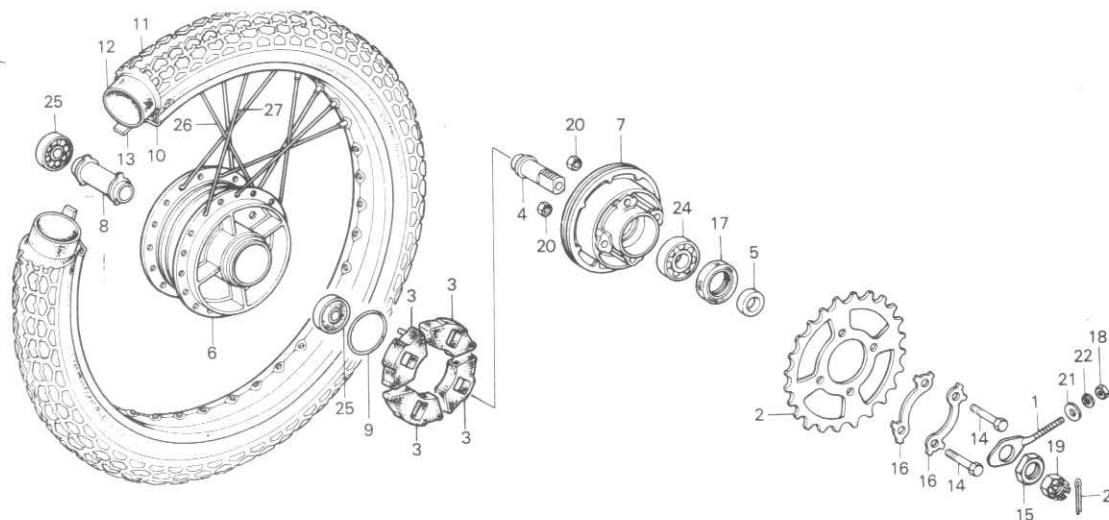
G10

G 11

Block No.

F-9

Rear Wheel



B086-108

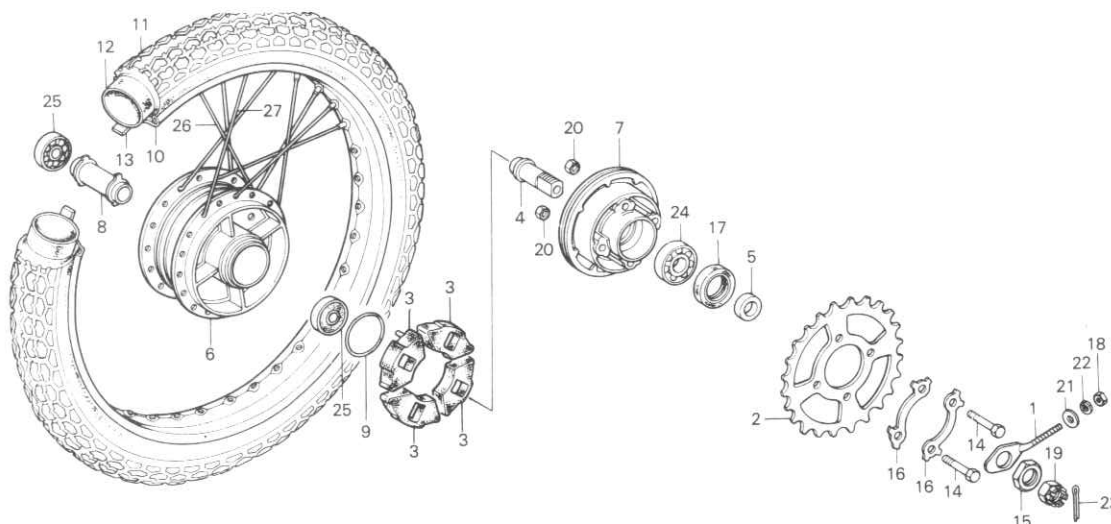
Service Item	F.R.T.	Ref. No.	Part No.	Description	Reqd. No. C90K3	Serial No.	Area Code
REAR WHEEL HUB COMP.	2.7	1	40544-035-000	ADJUSTER, L. DRIVE CHAIN	1		
REAR WHEEL RIM	2.3	2	41201-096-700	SPROCKET, FINAL DRIVEN (40T)	1		
REAR WHEEL TIRE/TUBE/TUBE FLAP	1.0	3	41241-001-050	DAMPER, RR. WHEEL	4		
FINAL DRIVEN FLANGE	0.9	4	42303-001-020	SLEEVE, RR. WHEEL AXLE	1		
BALL BEARING (Flange side)	0.8	5	42304-029-000	COLLAR, RR. WHEEL AXLE SLEEVE	1		
FINAL DRIVEN SPROCKET	0.7	6	42601-102-670	HUB COMP., RR. WHEEL	1		
REAR WHEEL AXLE DISTANCE COLLAR/		7	42610-030-000	FLANGE, FINAL DRIVEN	1		
BALL BEARING (Hub side)	0.5	8	42620-001-010	COLLAR, RR. AXLE DISTANCE	1		
* Add 0.1 at ball bearing		9	42653-001-004	O-RING, 40.5X3	1		
REAR WHEEL DAMPER	0.4	10	42701-030-003	RIM, RR. WHEEL (DAIDO)	1		
			42701-030-006	RIM, RR. WHEEL (TAKASAGO)	1		
		11	42711-052-009	TIRE, RR. WHEEL	1		
				(2.50-17 YOKOHAMA)			
			42711-052-016	TIRE, RR. (2.50-17-4PR NITTO)	1		
		12	42712-041-006	TUBE, TIRE (NITTO)	1		
			42712-052-009	TUBE, TIRE (YOKOHAMA)	1		
		13	42713-001-003	FLAP, TIRE (BS)	1		
			42713-102-006	FLAP, TIRE (17 NITTO)	1		
			42713-102-009	FLAP, TIRE (YOKOHAMA)	1		
		14	90128-001-030	BOLT, DRIVEN SPROCKET SETTING	4		
		15	90307-001-000	NUT, RR. AXLE SLEEVE	1		
		16	90522-001-000	WASHER, TONGUED, 8MM	2		
		17	90753-029-010	OIL SEAL, 27X40X6	1		
		18	94001-06000	NUT, HEX., 6MM	1		
		19	94011-12000-0S	NUT, CASTLE, 12MM	1		
		20	94030-08000	NUT, HEX., 8MM	4		
1977.01.20				G11			

G 12

Block No.

F-9

Rear Wheel



B086-108

Service Item	F.R.T.	Ref. No.	Part No.	Description	Reqd. No. C90K3	Serial No.	Area Code
		21	94101-06000	WASHER, PLAIN, 6MM	1		
		22	94111-06000	WASHER, SPRING, 6MM	1		
		23	94201-30250	PIN, SPLIT, 3.0X25	1		
		24	96120-62030	BEARING, RADIAL BALL, 6203Z	1		
		25	96140-63010-10	BEARING, RADIAL BALL, 6301U	2		
		26	97251-42163-13	SPOKE B, 10X161.5 (INSIDE)	18		
		27	97519-42162-12	SPOKE B, 10X161 (OUTSIDE)	18		

1977.01.20

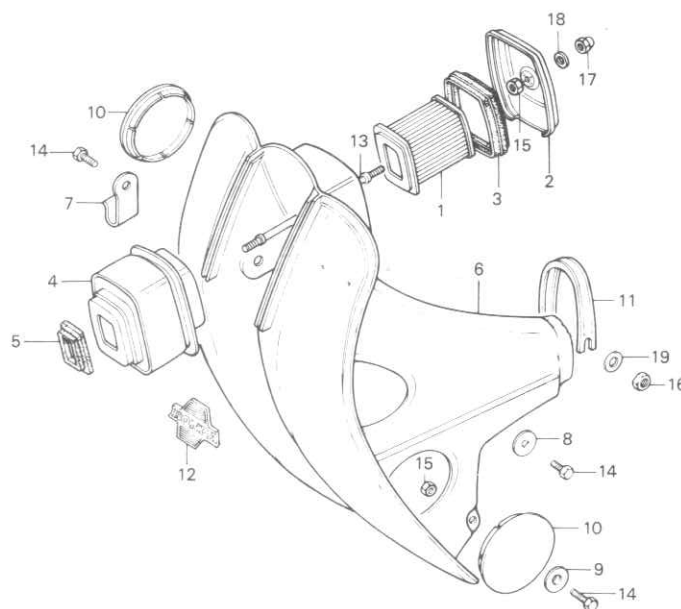
G12

G 13

Block No.

F-10

Front Cover •
Air Cleaner



B096-75

Service Item	F.R.T.	Ref. No.	Part No.	Description	Reqd. No. C90K3	Serial No.	Area Code
FRONT COVER	0.2	1	17211-041-005	ELEMENT, AIR CLEANER	1		
•AIR CLEANER CASE		2	17220-096-700XW	COVER, AIR CLEANER	1		
AIR CLEANER ELEMENT	0.1	3	17225-096-701	PACKING, AIR CLEANER CASE	1		
		4	17231-096-700	CASE, AIR CLEANER	1		
		5	17252-041-000	GASKET, AIR CLEANER CASE	1		
		6	64301-096-700ZA	COVER, FR. *NH-24*	1		
		7	64341-046-750XW	HOOK, FR. COVER	1		
		8	64347-001-000	WASHER, FR. COVER SETTING	1		
		9	64348-086-000	WASHER, FR. COVER FIXING	2		
		10	64365-046-000WF	CAP, FR. COVER	2		
		11	64370-096-000	BAND, FR. COVER SETTING	1		
		12	87102-086-720	EMBLEM, FR. COVER	1		
		13	90113-001-040	BOLT, AIR CLEANER SETTING	1		
		14	92000-06018	BOLT, HEX., 6X18	4		
		15	94001-06000	NUT, HEX., 6MM	3		
		16	94002-10000-0S	NUT, HEX., 10MM	2		
		17	94022-06020	NUT, CAP, 6MM	1		
		18	94101-06000	WASHER, PLAIN, 6MM	1		
		19	94111-10000	WASHER, SPRING, 10MM	2		

1977.01.20

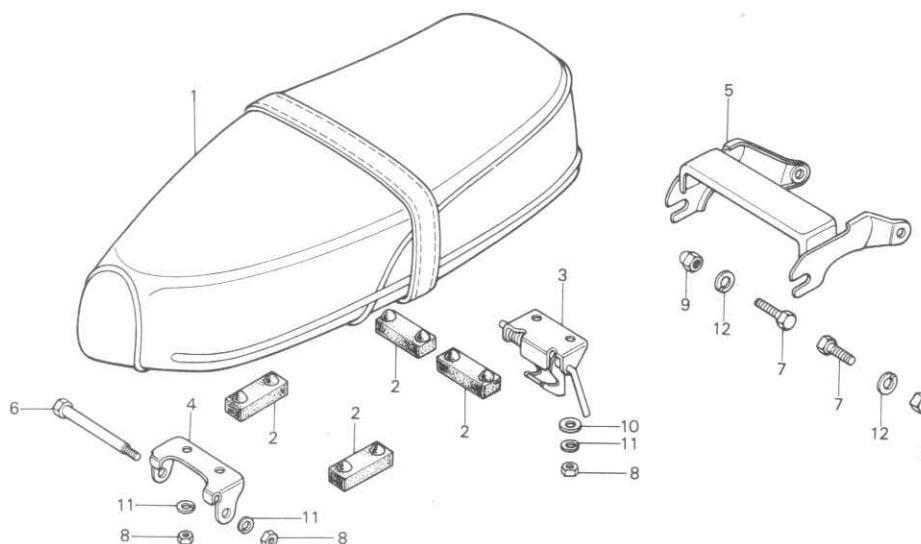
G13



Block No.

F-11

Double Seat



8096-76

Service Item	F.R.T.	Ref. No.	Part No.	Description	Reqd. No. C90K3	Serial No.	Area Code
DOUBLE SEAT and its related parts	0.1	1	77200-092-702A	SEAT COMP., DOUBLE	1		
		2	77205-292-010	RUBBER B, SEAT SETTING	4		
		3	77230-092-702	CATCH COMP., SEAT	1		
		4	77300-001-020B	BRACKET, SEAT	1		
		5	81500-096-681	BRACKET, SEAT CATCH	1		
		6	90101-001-010	PIN, SEAT HINGE	1		
		7	92000-08016-0A	BOLT, HEX., 8X16	2		
		8	94001-06000	NUT, HEX., 6MM	5		
		9	94021-08000	NUT, CAP, 8MM	2		
		10	94101-06000	WASHER, PLAIN, 6MM	2		
		11	94111-06000	WASHER, SPRING, 6MM	5		
		12	94111-08000	WASHER, SPRING, 8MM	2		

1977.01.20

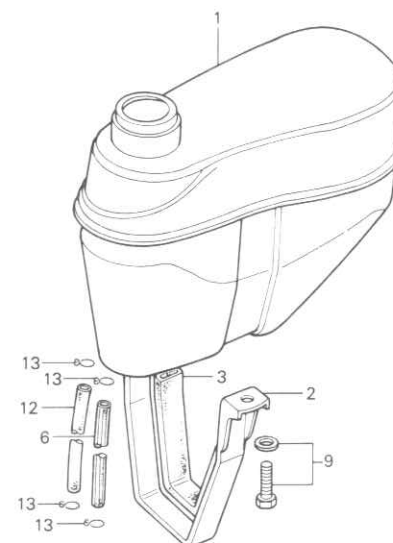
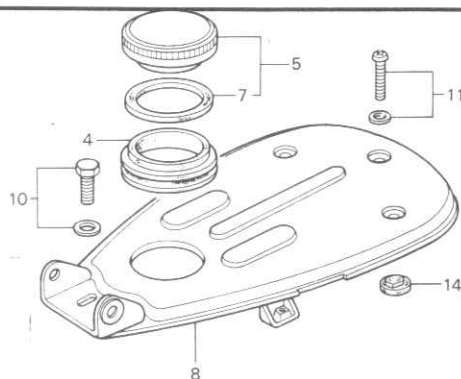
G14

G 15

Block No.

F-12

Fuel Tank



B086-74

Service Item	F.R.T.	Ref. No.	Part No.	Description	Reqd. No. C90K3	Serial No.	Area Code
FUEL TANK/FUEL TANK BAND	0.6	1	17500-096-030Z A	TANK COMP., FUEL *B-5M*	1		
• FRAME BODY LID			17500-096-030Z B	TANK COMP., FUEL *R-8*	1		
• FUEL TUBE		2	17503-096-000B	BAND, FUEL TANK	1		
* One or all at fuel tube		3	17504-096-000	CUSHION, FUEL TANK	1		
FILLER NECK GASKET	0.2	4	17512-086-010	GASKET, FUEL FILLER NECK	1		
		5	17620-096-702	CAP COMP., FUEL FILLER	1		
		6	17631-046-010	TUBE, FUEL RESERVE	1		
		7	17631-096-300	PACKING FUEL FILLER CAP	1		
		8	50751-096-030AW	LID, FRAME BODY	1		
			50751-096-030UL	LID, FRAME BODY	1		
		9	93481-06020-00	BOLT-WASHER, 6X20	2		
		10	93481-08016-00	BOLT-WASHER, 8X16	1		
		11	93891-06020-10	SCREW-WASHER, 6X20	1		
		12	95001-55450-40	TUBE, FUEL, 5.3X450	1		
		13	95002-02100	CLIP B10, TUBE	4		
		14	95011-63000	RUBBER C, STAND STOPPER	2		

1977.01.20

G15

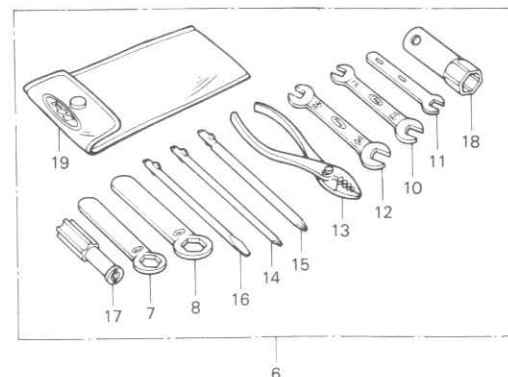
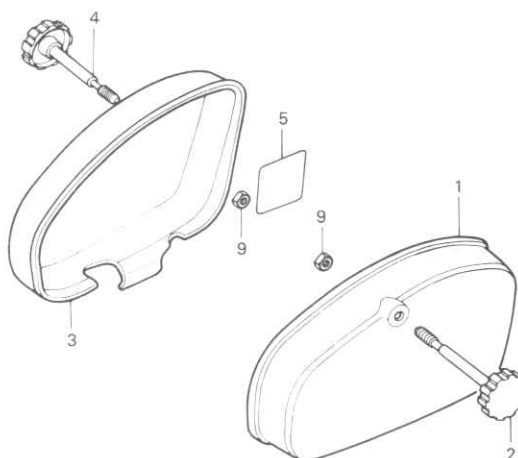


Block No.

F-13

Tool & Battery Boxes •

Tool



B096-77

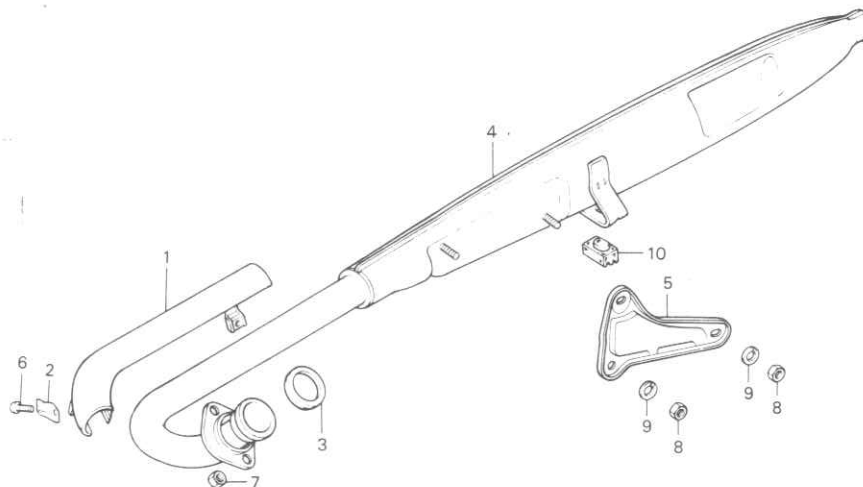
Service Item	F.R.T.	Ref. No.	Part No.	Description	Reqd. No. C90K3	Serial No.	Area Code
TOOL BOX COMP./LATCH • BATTERY BOX/LATCH	0.1	1	83500-086-000AW	BOX COMP., TOOL	1		
			83500-086-000UL	BOX COMP., TOOL	1		
		2	83550-086-000B	LATCH, TOOL BOX	1		
		3	83600-086-000AW	BOX, BATTERY	1		
			83600-086-000UL	BOX, BATTERY	1		
		4	83650-035-000B	LATCH, BATTERY BOX	1		
		5	87506-046-620	MARK, BATTERY CAUTION	1		
		6	89010-046-610	TOOL SET	1		
		7	89212-001-000	WRENCH, EYE, 17MM	1		
		8	89214-001-000	WRENCH, BOX, 23MM	1		
		9	94001-06000	NUT, HEX., 6MM	2		
		10	99001-08120	SPANNER, 8X12	1		
		11	99001-09000	SPANNER, 9	1		
		12	99001-10140	SPANNER, 10X14	1		
		13	99002-13500	PLIERS, 135	1		
		14	99003-10000	DRIVER 2, PLUS SCREW	1		
		15	99003-20000	DRIVER 3, PLUS SCREW	1		
		16	99003-30000	DRIVER 2, MINUS SCREW	1		
		17	99003-50000	GRIP	1		
18	99004-18001	WRENCH, BOX, P18	1				
19	99008-01600	BAG, TOOL, 160MM	1				
				1977.01.20	G16		



Block No.

F-14

Exhaust Muffler



B046-97

Service Item	F.R.T.	Ref. No.	Part No.	Description	Reqd. No. C90K3	Serial No.	Area Code
EXHAUST MUFFLER COMP./		1	18240-046-020	COVER, EX. PIPE	1		
MUFFLER STAY	0.3	2	18272-220-000	BAND B, EX. COVER SETTING	2		
EXHAUST PIPE GASKET	0.2	3	18291-028-000	GASKET, EX. PIPE	1		
EXHAUST PIPE COVER	0.1	4	18300-096-700	MUFFLER COMP., EX.	1		
		5	18315-096-700ZA	STAY, MUFFLER *NH-1*	1		
		6	93500-05012-0A	SCREW, PAN, 5X12	2		
		7	94001-06000	NUT, HEX., 6MM	2		
		8	94001-08000-0S	NUT, HEX., 8MM	2		
		9	94111-08000	WASHER, SPRING, 8MM	2		
		10	95011-61000	RUBBER A, STAND STOPPER	1		

1977.01.20

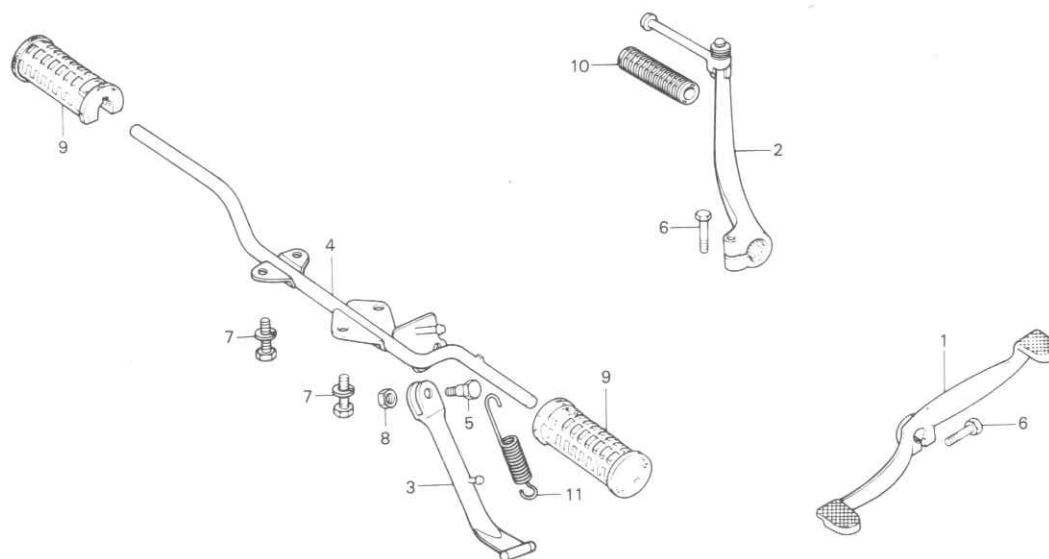
H1



Block No.

F-15

**Kick & Change Pedals •
Step**



B046-98

Service Item	F.R.T.	Ref. No.	Part No.	Description	Reqd. No. C90K3	Serial No.	Area Code
STEP BAR COMP.	0.5	1	24701-096-700	PEDAL, GEAR CHANGE	1		
SIDE STAND BAR COMP.	0.2	2	28300-040-000	ARM ASSY., KICK STARTER	1		
GEAR CHANGE PEDAL	0.1	3	50530-086-000B	BAR COMP., SIDE STAND	1		
• KICK STARTER ASSY./RUBBER		4	50610-046-750B	BAR COMP., STEP	1		
• SIDE STAND SPRING		5	90108-223-000	SCREW, SIDE STAND PIVOT	1		
• STEP RUBBER		6	92000-06020	BOLT, HEX., 6X20	2		
* One or all at step rubber		7	93482-08020-00	BOLT-WASHER, 8X20	4		
		8	94002-10000-0S	NUT, HEX., 10MM	1		
		9	95011-21000	RUBBER, STEP	2		
		10	95011-51000	RUBBER A, KICK STARTER	1		
		11	95014-72102	SPRING A, SIDE STAND	1		

1977.01.20

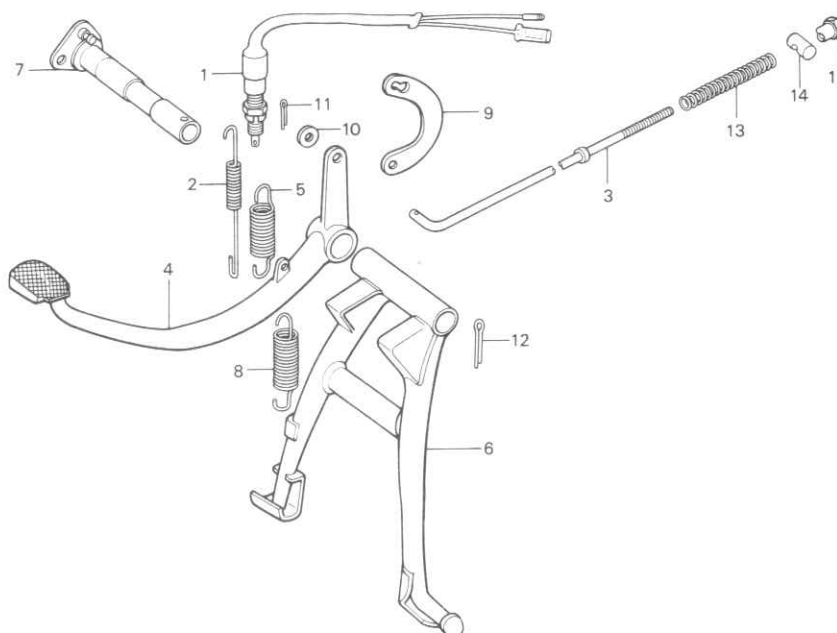
H2



Block No.

F-16

**Main Stand •
Brake Pedal**



B046-102

Service Item	F.R.T.	Ref. No.	Part No.	Description	Reqd. No. C90K3	Serial No.	Area Code
MAIN STAND COMP./REAR BRAKE PIVOT PIPE/BRAKE PEDAL	0.5	1	35350-086-721	SWITCH ASSY., STOP	1		
		2	35357-046-000	SPRING, STOP SWITCH	1		
MAIN STAND SPRING/HOOK	0.2	3	43450-397-000	ROD, RR. BRAKE	1		
• STOP SWITCH ASSY.		4	46500-096-700	PEDAL COMP., BRAKE	1		
• REAR BRAKE ROD		5	46514-096-700	SPRING, BRAKE PEDAL	1		
BRAKE PEDAL SPRING	0.1	6	50500-046-670B	STAND COMP., MAIN	1		
• STOP SWITCH SPRING		7	50512-033-000	PIPE, RR. BRAKE PIVOT	1		
		8	50522-001-000	SPRING, MAIN STAND	1		
		9	50523-001-000	HOOK, MAIN STAND SPRING	1		
		10	94101-06000	WASHER, PLAIN, 6MM	1		
		11	94201-16150	PIN, SPLIT, 1.6X15	1		
		12	94201-30250	PIN, SPLIT, 3.0X25	1		
		13	95014-73100	SPRING A, BRAKE ROD	1		
		14	95015-32001	JOINT B, BRAKE ARM	1		
		15	95015-42000	NUT B, BRAKE ROD ADJUST	1		

1977.01.20

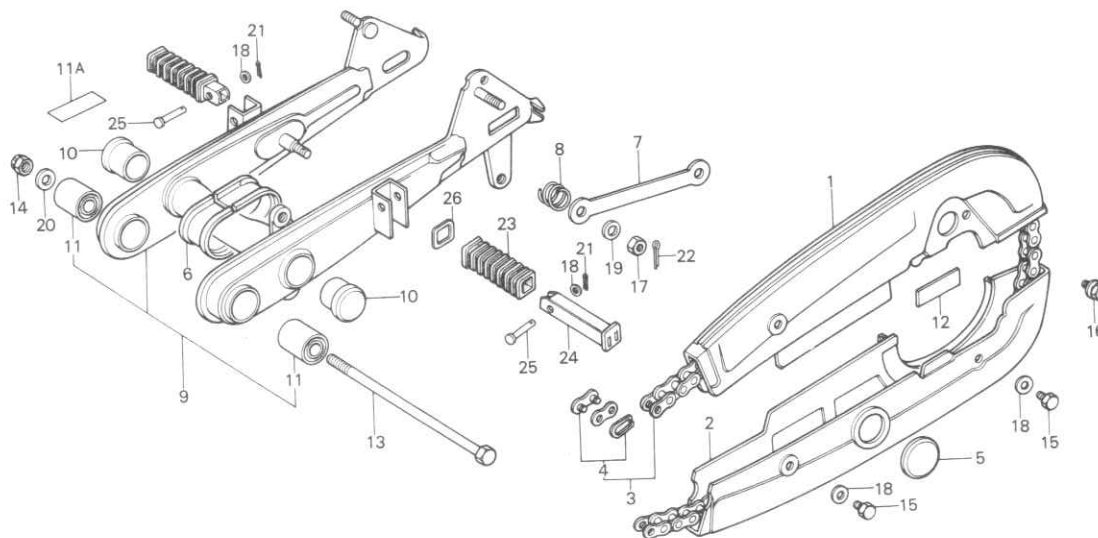
H3



Block No.

F-17

**Rear Fork •
Chain Case**



B096-79

Service Item	F.R.T.	Ref. No.	Part No.	Description	Reqd. No. C90K3	Serial No.	Area Code
REAR FORK PIVOT RUBBER BUSH * One or all	1.0	1	40510-065-010AW	CASE, DRIVE CHAIN UPPER HALF	1		
			40510-065-010UL	CASE, DRIVE CHAIN UPPER HALF	1		
REAR FORK ASSY.	0.8	2	40520-065-010AW	CASE, DRIVE CHAIN UNDER HALF	1		
DRIVE CHAIN and its related parts	0.3		40520-065-010UL	CASE, DRIVE CHAIN UNDER HALF	1		
REAR BRAKE STOPPER ARM	0.2	3	40530-030-811	CHAIN, DRIVE (100L TAKASAGO)	1		
DRIVE CHAIN UPPER/UNDER HALF CASE	0.1		40530-030-812	CHAIN, DRIVE (100L DAIDO)	1		
• PILLION STEP RUBBER		4	40531-205-003	JOINT, DRIVE CHAIN (DAIDO)	1		
• One or all at rubber			40531-205-005	JOINT, DRIVE (TAKASAGO)	1		
		5	40545-001-000B	CAP, CHAIN CASE PEEP HOLE	1		
		6	40591-041-000	PACKING, DRIVE CHAIN CASE	1		
		7	43431-086-720	LINK, RR. BRAKE TORQUE	1		
		8	43434-250-000	SPRING, STOPPER ARM	1		
		9	52000-096-720ZA	FORK ASSY., RR. *B-5M*	1		
			52000-096-720ZB	FORK ASSY., RR. *R-8*	1		
		10	52161-051-000B	SIDE CAP, RR. FORK CROSS MEMBER	2		
		11	52181-001-300	BUSH, RR. FORK PIVOT RUBBER	2		
		11A	87125-041-680	PLATE, NAME	1	DK,DM	
		12	87505-096-720	MARK, TIRE CAUTION	1		
		13	90121-092-670	BOLT, RR. FORK PIVOT	1		
		14	90351-268-000	NUT, SELF LOCK, 10MM	1		
		15	92000-06006	BOLT, HEX., 6X6	3		
		16	93481-06010-00	BOLT-WASHER, 6X10	1		
		17	94001-08000-0S	NUT, HEX., 8MM	1		
		18	94101-06000	WASHER, PLAIN, 6MM	5		
		19	94101-08000	WASHER, PLAIN, 8MM	1		
		20	94101-10000	WASHER, PLAIN, 10MM	1		

1977.01.20

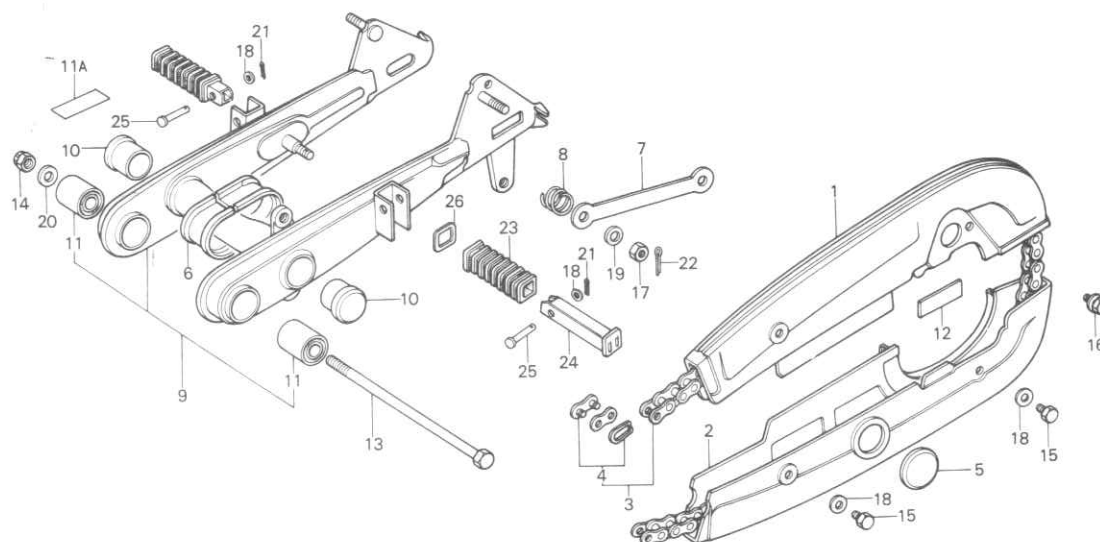
H4



Block No.

F-17

**Rear Fork •
Chain Case**



B096-79

Service Item	F.R.T.	Ref. No.	Part No.	Description	Reqd. No. C90K3	Serial No.	Area Code
		21	94201-16150	PIN, SPLIT, 1.6X15	2		
		22	94201-20150	PIN, SPLIT, 2.0X15	1		
		23	95011-31000	RUBBER A, PILLION STEP	2		
		24	95015-61000	BAR A, PILLION STEP	2		
		25	95015-81000	PIN A, PILLION STEP	2		
		26	95015-91000	WASHER, PILLION STEP	2		

1977.01.20

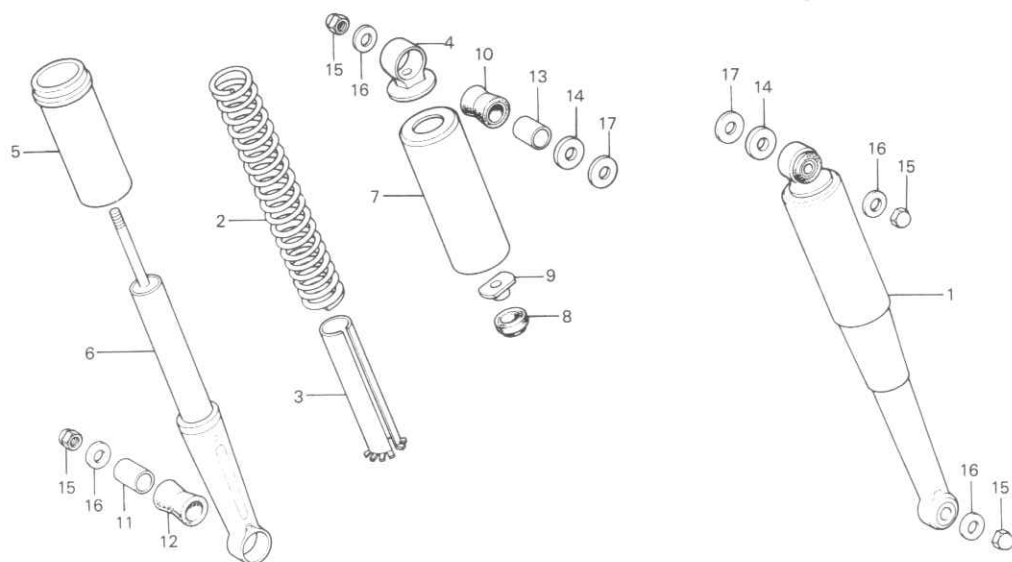
H5



Block No.

F-18

Rear Cushion



B096-80

Service Item	F.R.T.	Ref. No.	Part No.	Description	Reqd. No. C90K3	Serial No.	Area Code
REAR CUSHION SPRING and its related parts	0.3	1	52400-096-000AW	CUSHION ASSY., RR.	2		
REAR CUSHION ASSY.	0.1		52400-096-000UL	CUSHION ASSY., RR.	2		
		2	52401-034-000	SPRING, CUSHION	2		
		3	52409-011-000	GUIDE, RR. CUSHION SPRING	2		
		4	52410-033-000	METAL, RR. CUSHION UPPER	2		
		5	52423-035-000	CASE, RR. CUSHION BOTTOM	2		
		6	52450-035-305	DAMPER COMP., RR.	2		
		7	52460-051-820AW	CASE, RR. CUSHION UPPER	2		
			52460-051-820UL	CASE, RR. CUSHION	2		
		8	52475-051-000	RUBBER, RR. CUSHION STOPPER	2		
		9	52481-051-000	NUT, RR. CUSHION UPPER LOCK	2		
		10	52485-001-020	BUSH, RR. CUSHION RUBBER	2		
		11	52486-035-000	COLLAR, RR. CUSHION RUBBER	2		
				BUSH			
		12	52489-028-000	BUSH, RR. CUSHION RUBBER	2		
		13	52496-040-000	COLLAR, RR. CUSHION RUBBER	2		
				BUSH			
		14	90555-001-000	WASHER, SPECIAL, 12MM	2		
		15	94021-10000-0S	NUT, CAP, 10MM	4		
		16	94101-10000	WASHER, PLAIN, 10MM	4		
		17	94101-12000	WASHER, PLAIN, 12MM	2		

1977.01.20

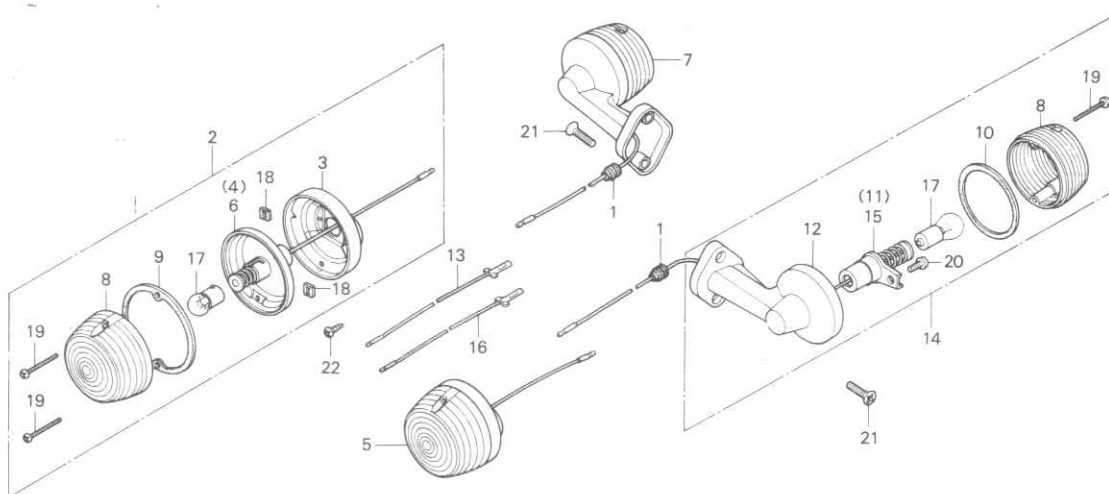
H6



Block No.

F-19

Winker (DK,DM)



B086-111

Service Item	F.R.T.	Ref. No.	Part No.	Description	Reqd. No. C90K3	Serial No.	Area Code
REAR WINKER ASSY./WINKER BASE and those related parts	0.7	1	32982-011-000	GROMMET, TAILLIGHT CORD	2		DK,DM
		2	33400-086-720	WINKER ASSY., R. FR.	1		DK,DM
* One motorcycle 0.8 at rear winker		3	33411-086-003	BASE, R. FR. WINKER	2		DK,DM
FRONT WINKER ASSY./WINKER BASE and those related parts	0.2	4	33415-086-003	SOCKET, R. FR. WINKER	1		DK,DM
		5	33450-086-720	WINKER ASSY., L. FR.	1		DK,DM
* One motorcycle 0.3 at front winker		6	33465-086-003	SOCKET COMP., L. FR. WINKER	1		DK,DM
WINKER LENS/BULB	0.1	7	33600-046-761	WINKER ASSY., R. RR.	1		DK,DM
		8	33602-046-751	LENS, WINKER	4		DK,DM
		9	33604-041-003	PACKING, WINKER LENS	2		DK,DM
		10	33604-041-013	PACKING, RR. WINKER LENS	2		DK,DM
		11	33610-041-683	SOCKET COMP., R. RR. WINKER	1		DK,DM
		12	33611-041-043	BASE COMP., R. RR. WINKER	2		DK,DM
		13	33615-086-680	SUB CORD, R. RR. WINKER	1		DK,DM
		14	33650-046-761	WINKER ASSY., L. RR.	1		DK,DM
		15	33655-041-683	SOCKET COMP., L. RR. WINKER	1		DK,DM
		16	33665-086-680	SUB CORD, L. RR. WINKER	1		DK,DM
		17	34905-035-000	BULB, WINKER (6V 8W)	4		DK,DM
		18	90310-041-000	NUT, SPECIAL, 3MM	4		DK,DM
		19	93500-03025-0B	SCREW, PAN, 3X25	8		DK,DM
		20	93500-04006-0A	SCREW, PAN, 4X6	2		DK,DM
		21	93700-05018-0A	SCREW, OVAL, 5X18	4		DK,DM
		22	93901-24110	SCREW, TAPPING, 4X8	4		DK,DM

1977.01.20

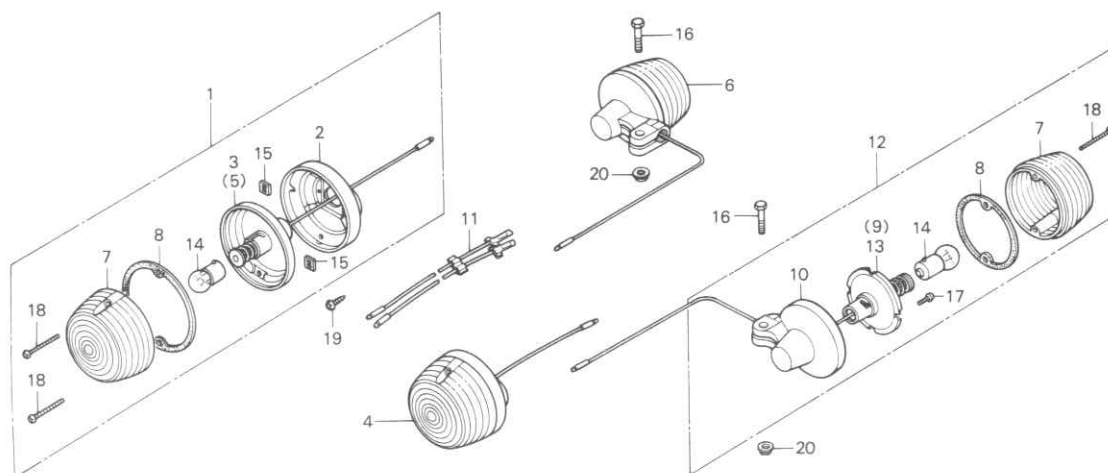
H7



Block No.

F-19-1

Winker (U)



B086-112

Service Item	F.R.T.	Ref. No.	Part No.	Description	Reqd. No. C90K3	Serial No.	Area Code
REAR WINKER ASSY./WINKER BASE and those related parts	0.7	1	33400-086-720	WINKER ASSY., R. FR.	1		U
		2	33411-086-003	BASE, R. FR. WINKER	2		U
* One motorcycle 0.8 at rear winker		3	33415-086-003	SOCKET, R. FR. WINKER	1		U
FRONT WINKER ASSY./WINKER BASE and those related parts	0.2	4	33450-086-720	WINKER ASSY., L. FR.	1		U
		5	33465-086-003	SOCKET COMP., L. FR. WINKER	1		U
* One motorcycle 0.3 at front winker		6	33600-096-741	WINKER ASSY., R. RR.	1		U
WINKER LENS/BULB	0.1	7	33602-046-751	LENS, WINKER	4		U
		8	33604-041-003	PACKING, WINKER LENS	4		U
		9	33610-087-741	SOCKET COMP., R. RR. WINKER	1		U
		10	33611-041-672	BASE COMP., R. RR. WINKER	2		U
		11	33617-092-620	CORD COMP., WINKER	1		U
		12	33650-096-741	WINKER ASSY., L. RR.	1		U
		13	33660-087-741	SOCKET COMP., L. RR. WINKER	1		U
		14	34905-035-000	BULB, WINKER (6V 8W)	4		U
		15	90310-041-000	NUT, SPECIAL, 3MM	4		U
		16	93000-06028	BOLT, HEX., 6X28	2		U
		17	93500-03005-0A	SCREW, PAN, 3X5	4		U
		18	93500-03025-0B	SCREW, PAN, 3X25	8		U
		19	93901-24110	SCREW, TAPPING, 4X8	4		U
		20	94050-06000	NUT, FLANGE, 6MM	2		U

1977.01.20

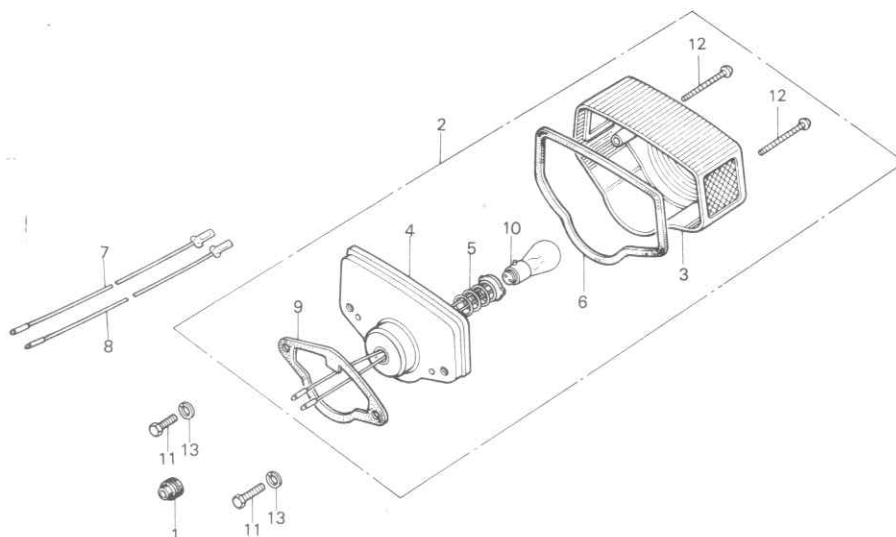
H8



Block No.

F-20

Taillight



B096-83

Service Item	F.R.T.	Ref. No.	Part No.	Description	Reqd. No. C90K3	Serial No.	Area Code
TAIL LIGHT ASSY./TAIL LIGHT BASE	0.2	1	32982-011-000	GROMMET, TAILLIGHT CORD	1		DK,DM
TAIL LIGHT LENS/BULB	0.1		32983-011-000	GROMMET, WIRE CORD	1		U
		2	33700-096-680	TAILLIGHT ASSY.	1		
		3	33702-303-003	LENS, TAILLIGHT (STANEY)	1		
		4	33703-089-003	SOCKET, TAIL LIGHT	1		
		5	33708-077-671	CORD COMP., TAILLIGHT	1		
		6	33709-077-671	PACKING, TAILLIGHT LENS	1		
		7	33711-028-000	SUB CORD, TAILLIGHT	1		
		8	33713-087-720	SUB CORD, STOP LIGHT	1		
		9	33719-089-003	PACKING, TAIL LIGHT BASE	1		
		10	34906-030-013	BULB, STOP & TAIL LIGHT (6V 10/3W)	1		
		11	92000-05016-0A	BOLT, HEX., 5X16	2		
		12	93500-04050-0A	SCREW, PAN, 4X50	2		
		13	94111-05000	WASHER, SPRING, 5MM	2		

1977.01.20

H9



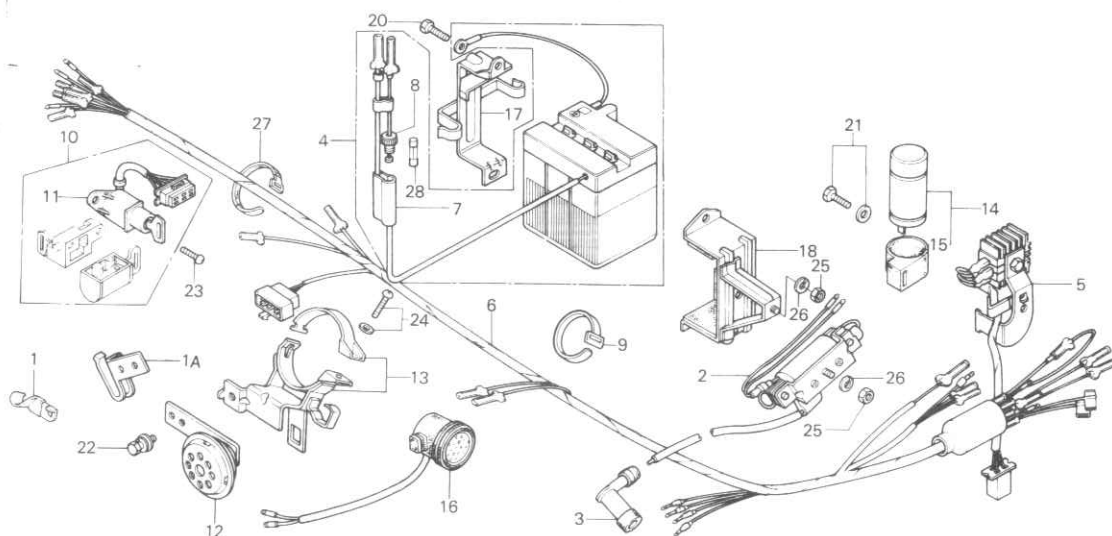
Block No.

F-21

Wire Harness •

Ignition Coil •

Battery



B096-81

Service Item	F.R.T.	Ref. No.	Part No.	Description	Reqd. No. C90K3	Serial No.	Area Code
		26	94111-06000	WASHER, SPRING, 6MM	2		
		27	95014-61300	BAND A3, WIRE	1		
		28	98200-11000	FUSE A (10A)	1		

1977.01.20

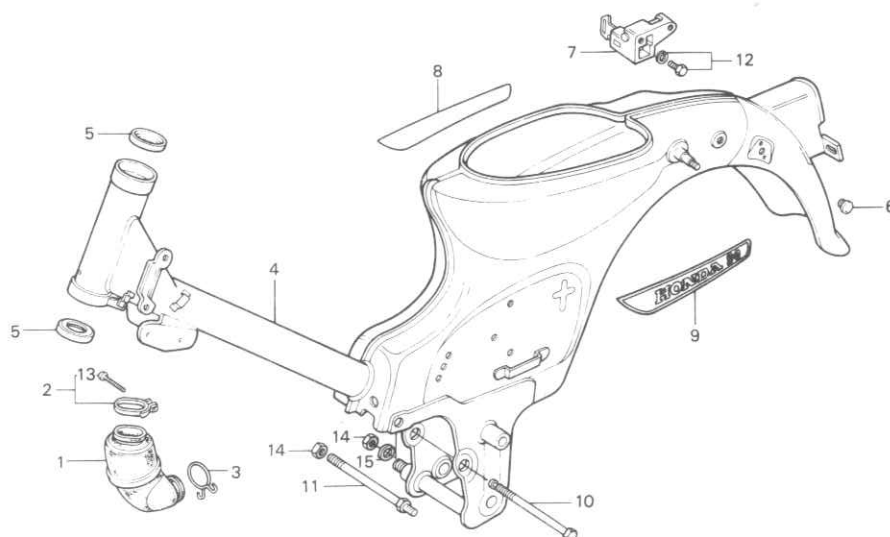
H11



Block No.

F-22

Frame Body



B096-82

Service Item	F.R.T.	Ref. No.	Part No.	Description	Reqd. No. C90K3	Serial No.	Area Code
FRAME BODY COMP.	5.0	1	17253-096-720	TUBE, AIR CLEANER CONNECTING	1		
STEERING TOP BALL RACE	1.1	2	17255-096-000	BAND, CLEANER CONNECTING TUBE	1		
* One or all		3	17256-086-720	CLIP B, AIR CLEANER CONNECTING TUBE	1		
HELMET HOLDER ASSY.	0.5	4	50100-096-700ZC	BODY COMP., FRAME *B-5M*	1		DK,DM
AIR CLEANER CONNECTING TUBE	0.2		50100-096-700ZE	BODY COMP., FRAME *R-8*	1		DK,DM
			50100-096-740ZA	BODY COMP., FRAME *B-5M*	1		U
			50100-096-740ZB	BODY COMP., FRAME *R-8*	1		U
		5	50301-041-000	RACE, STEERING TOP BALL	2		
		6	50318-041-600	PLUG, USELESS HOLE	2		U
		7	50710-086-007	HOLDER ASSY., HELMET	1		
		8	87121-096-720	EMBLEM, R. FRAME BODY	1		
		9	87122-096-720	EMBLEM, L. FRAME BODY	1		
		10	90112-046-000	BOLT, ENGINE HANGER	1		
		11	90116-046-000	BOLT, RR. ENGINE UNDER	1		
		12	93482-06008-00	BOLT-WASHR, 6X8	2		
		13	93500-04020-0A	SCREW, PAN, 4X20	1		
		14	94030-10000	NUT, HEX., 10MM	2		
		15	94111-10000	WASHER, SPRING, 10MM	1		

1977.01.20

H12

PART NO. INDEX

Part No.	Address No.	Part No.	Address No.	Part No.	Address No.	Part No.	Address No.	Part No.	Address No.	Part No.	Address No.
11000		14000		16199-092-700	D2	22511-096-000	C10	30000		33111-088-000	G2
11100-121-690	C14	14101-052-000	C6	16201-096-720	C2	22531-033-010	C10			33117-041-003	G2
11191-052-000	C14	14311-028-010	C15	16211-096-720	C2	22535-033-000	C10	30200-052-013	C3	33120-086-711	G2
11200-096-700	C14	14321-028-000	C7	16236-045-010	C5	22536-033-000	C10	30200-052-014	C3	33130-028-013	G2
1133C-096-010	C9	14401-028-003	C7			22811-046-010	C9	30200-052-154	C3	33135-086-003	G2
11341-096-010	C12	14431-028-010	C6	17000		22820-918-000	C9	30201-107-154	C3	33400-086-720	H7
11361-096-000	C12	14451-028-010	C6	17111-096-720	C2	22825-046-000	C9	30202-028-003	C3		H8
11393-028-020	C9	14500-096-020	C7	17121-130-640	H10	22830-046-000	C9	30202-107-004	C3	33411-086-003	H7
11394-028-040	C12	14541-086-010	C7	17211-041-005	G13	22846-053-010	C9	30202-107-154	C3		H8
11431-028-000	C12	14542-086-000	C7	17220-096-700XW	G13	22860-046-000	C9	30205-028-003	C3	33415-086-003	H7
11691-028-000	C12	14550-086-010	C7	17225-096-701	G13	22901-102-700	C10	30205-028-004	C3		H8
		14561-086-010	C7	17231-096-700	G13	22911-046-000	C10	30205-300-154	C3	33450-086-720	H7
12000		14561-096-000	C7	17252-041-000	G13			30220-053-003	C3		H8
12021-028-340	C5	14562-086-000	C7	17253-096-720	H12	23000		30220-053-004	C3	33465-086-003	H7
12023-028-330	C5	14592-028-010	C7	17255-096-000	H12	23110-046-000	C10	30220-053-154	C3		H8
12100-028-120	C5	14593-028-010	C7	17256-086-720	H12	23111-096-000	C10	30360-028-020	C3	33600-046-761	H7
12191-028-020	C5	14610-105-690	C7	17500-096-030ZA	G15	23111-096-000	C16	30370-046-000	C3	33600-096-741	H8
12200-028-120	C5	14615-035-000	C7	17500-096-030ZB	G15	23221-046-020	C16	30391-028-000	C3	33602-046-751	H7
12251-028-030	C5	14670-028-000	C7	17503-096-000B	G15	23421-096-000	C16	30392-028-020	C3		H8
12261-105-690	C5	14711-028-000	C6	17504-096-000	G15	23431-096-000	C16	30530-096-701	H10	33604-041-003	H7
12301-096-000	C2	14721-028-602	C6	17505-086-710	H10	23441-096-010	C16	30700-098-153	H10		H8
12331-128-000	C2	14730-028-013	C6	17512-086-010	G15	23471-096-000	C16	30905-216-000	C6	33604-041-013	H7
12332-028-030	C3	14731-028-000	C6	17620-096-702	G15	23481-096-000	C16			33610-041-683	H7
12361-028-000	C2	14751-028-010	C6	17631-046-010	G15	23801-046-000	C16	31000		33610-087-741	H8
12391-028-000	C2	14761-028-020	C6	17631-096-700	G15			31100-053-013	C12	33611-041-043	H7
12394-028-010	C2	14771-030-000	C6	17910-096-720	G3	24000		31101-053-003	C12	33611-041-672	H8
12901-028-020	C5	14775-028-010	C6	17950-046-790	G3	24211-046-315	D1	31101-053-004	C12	33615-086-680	H7
12902-105-690	C5	14776-028-000	C6	17965-086-720	G3	24261-028-010	D1	31102-046-014	C12	33617-092-620	H8
		14781-001-010	C6	17966-086-720	G3	24263-028-000	D1	31102-046-023	C12	33650-046-761	H7
13000		15000		18000		24301-046-020	D1	31104-128-004	C12	33650-096-741	H8
1300C-028-040	C15	15100-053-010	C14	18240-046-020	H1	24421-001-010	D1	31105-028-000	C12	33655-041-683	H7
13010-028-014	C15	15111-053-020	C14	18272-220-000	H1	24422-001-000	D1	31105-128-004	C12	33660-087-741	H8
13010-028-025	C15	15119-028-030	C14	18291-028-000	H1	24423-028-000	D1	31500-096-720	H10	33665-086-680	H7
13020-028-014	C15	15121-028-060	C14	18300-096-700	H1	24425-028-000	D1	31700-086-695	H10	33700-089-003	H9
13020-028-025	C15	15128-028-030	C14	18315-096-700ZA	H1	24430-096-700	D1			33708-077-671	H9
13030-028-014	C15	15181-028-050	C14	18362-720-000	G8	24435-046-000	D1	32000		33709-077-671	H9
13030-028-025	C15	15331-053-010	C14		G10	24610-046-020	D1	32100-096-700	H10	33711-028-000	H9
13040-028-014	C15	15332-053-010	C14			24630-046-010	D1	32106-046-000	H10	33713-087-720	H9
13040-028-025	C15	15421-035-010	C14	22000		24641-046-000	D1	32112-041-000	H10	33719-089-003	H9
13050-028-014	C15	15650-086-000	C9	22101-046-030	C10	24651-033-010	D1	32161-001-000	H10	33740-092-003	G6
13050-028-025	C15			22111-028-010	C10	24652-035-000	D1	32906-061-000	C5		
13101-028-070	C15	16000		22112-028-000	C10	24701-096-700	H2	32981-121-003	C12	34000	
13102-028-070	C15	16010-096-720	D2	22121-096-700	C10	25000		32982-011-000	H7	34901-030-003	G2
13103-028-070	C15	16011-143-620	D2	22201-121-690	C10	25551-918-000	C9		H9	34903-046-751	G2
13104-028-070	C15	16012-096-720	D2	22311-096-000	C10	25555-046-000	C9	32983-011-000	H9	34905-035-000	H7
13105-028-070	C15	16013-124-760	D2	22321-046-010	C10						H8
13111-028-000	C15	16014-130-640	D2	22331-046-000	C10	28000		33000		34906-030-013	H9
13115-200-000	C15	16015-086-700	D2	22341-046-000	C10	28223-035-035	C16	33100-086-711	G2	34908-230-000	G2
13201-028-010	C15	16016-086-700	D2	22401-046-000	C10	28250-028-010	C16	33101-041-023	G2		
13211-235-000	C15	16022-096-720	D2	22411-096-000	C10	28261-028-010	C16	33102-086-003	G2		
13310-028-070	C15	16100-096-723	D2	22421-028-000	C10	28300-040-000	H2	33107-030-003	G2	35030-086-690	H10
13321-028-060	C15	16118-121-014	D2	22431-046-010	C10			33109-087-003	G2	3510C-086-694	H10
13381-028-000	C15	16165-096-720	D2								

PART NO. INDEX

Part No.	Address No.	Part No.	Address No.	Part No.	Address No.	Part No.	Address No.	Part No.	Address No.	Part No.	Address No.
35150-086-711	G3	42711-052-016	G11	46514-096-700	H3	52410-033-000	H6	64347-001-000	G13	90015-028-000	C14
35200-086-721	G3	42712-041-006	G8			52423-035-000	H6	64348-086-000	G13	90023-001-010	D1
35340-086-721	G3		G11	50000		52450-035-305	H6	64365-046-000WF	G13	90031-028-010	C14
35350-086-721	H3	42712-052-009	G8			52460-051-820AW	H6	64370-096-000	G13	90032-028-020	C14
35357-046-000	H3		G11	50100-096-700ZC	H12	52460-051-820UL	H6			90081-086-000	C7
35750-028-000	C12	42713-001-003	G11	50100-096-700ZE	H12	52475-051-000	H6	77000		90101-001-010	G14
35752-028-300	C12	42713-102-006	G8	50100-096-740ZA	H12	52481-051-000	H6			90101-086-010	G5
35753-028-601	D1		G11	50100-096-740ZB	H12	52485-001-020	H6	77200-092-702A	G14	90101-087-720	G2
		42713-102-009	G8	50301-041-000	H12	52486-035-000	H6	77205-292-010	G14	90108-223-000	H2
37000			G11	50318-041-600	H12	52489-028-000	H6	77230-092-702	G14	90112-046-000	H12
37200-096-721	G2			50373-096-700	H10	52496-040-000	H6	77300-001-020B	G14	90113-001-040	G13
37200-096-731	G2	43000		50381-096-700	H10					90114-001-000	G3
37244-086-000	G2			50500-046-670B	H3	53000		81000		90116-046-000	H12
		43100-096-700	G10	50512-033-000	H3					90121-092-670	H4
		43141-400-000	G8	50522-001-000	H3	53100-086-010AW	G4	81100-086-010	G5	90125-041-000	G7
38000		43145-096-700	G10	50523-001-000	H3	53100-086-010UL	G4	81311-086-810	G5	90127-400-000	G10
38110-086-721	H10	43410-096-700	G10	50530-086-000B	H2	53120-086-720ZB	G4	81312-086-810	G5	90128-001-030	G11
38110-096-700	H10	43431-086-720	H4	50610-046-750B	H2	53120-086-720ZE	G4	81500-096-681	G14	90141-028-000	C12
38300-086-710	H10	43434-250-000	H4	50710-086-007	H12	53141-034-000	G3			90149-041-010	G7
38306-292-000	H10	43450-397-000	H3	50751-096-030AW	G15	53161-033-000	G3	83000		90164-028-000	G6
38400-096-701	H10			50751-096-030UL	G15	53162-001-020	G3			90206-001-000	C6
		44000				53165-041-000	G3	83500-086-000AW	G16	90231-028-000	C10
40000		44301-096-650	G8	51000		53166-041-000	G3	83500-086-000UL	G16	90301-086-000	G6
		44311-046-000	G8	51100-086-030AW	G6	53175-096-650	G3	83550-086-000B	G16	90304-030-000	G4
40510-065-010AW	H4	44601-150-000	G8	51100-086-030UL	G6	53211-030-000	G6	83600-086-000AW	G16	90307-001-000	G11
40510-065-010UL	H4	44620-400-000	G8	51102-086-720	G4	53212-030-000	G6	83600-086-000UL	G16	90310-041-000	H7
40520-065-010AW	H4	44701-030-003	G8	51310-046-010	G7	53214-001-010	G6	83650-035-000B	G16		H8
40520-065-010UL	H4	44711-052-006	G8	51311-041-006	G7	53215-001-000	G6			90349-001-000	G7
40530-030-811	H4	44711-052-009	G8	51312-041-006	G7	53220-041-010	G6	87000		90351-268-000	H4
40530-030-812	H4	44804-096-650	G8	51320-096-650	G7	53231-086-720	G4	87102-086-720	G13	90405-001-000	C14
40531-205-003	H4	44808-107-720	G8	51331-041-000	G7	53232-086-720	G4	87105-096-700	G5	90417-041-000	D1
40531-205-005	H4	44830-090-600	G2	51332-001-000	G7	53233-086-000	G4	87121-096-720	H12	90431-028-010	C10
40543-035-000	G10	44831-086-720	G2	51333-001-000	G7	53234-086-000	G4	87122-096-720	H12	90441-028-010	C3
40544-035-000	G11			51334-041-000	G7	53235-086-000	G4	87125-041-680	H4	90441-035-000	C7
40545-001-000B	H4	45000		51335-001-000	G7	53236-086-000	G4	87250-041-680	H4	90442-028-000	C2
40591-041-000	H4			51336-001-000	G7			87505-096-720	H4	90451-121-000	C16
		45010-096-700	G8	51341-001-000WF	G6	53600-086-007	G6	87506-046-620	G16	90461-028-000	C16
41000		45120-096-651	G8	51344-046-750XW	G6			87560-323-670A	G4	90481-035-000	C7
			G10	51345-046-750XW	G6	61000		87560-323-670B	G4	90482-028-000	C3
41201-096-700	G11	45120-096-652	G8	51351-041-010	G7	61100-086-000AW	G6			90483-028-000	C2
41241-001-050	G11		G10	51400-096-003	G7	61100-086-000UL	G6	88000		90483-034-000	C10
		45131-400-000	G10	51400-096-702	G7	61117-041-010	G6			90485-040-000	C9
42000		45133-028-000	G8	51486-086-000	G7	61142-001-000	G6	88110-086-020	G3	90486-028-000	C3
			G10	51489-086-000	G7	61150-086-020AW	G5	88110-092-620	G3	90518-086-000	G4
42301-041-030	G10	45134-250-000	G8			61150-086-020UL	G5	88120-086-812	G3	90522-001-000	G11
42303-001-020	G11	45145-096-650	G8	52000				88120-092-620	G3	90552-001-000	G4
42304-029-000	G11	45410-096-650	G8	52000-096-720ZA	H4	64000				90555-001-000	H6
42313-041-000	G10	45411-087-820	G8	52000-096-720ZB	H4			89000		90601-030-000	C16
42601-102-670	G11	45437-001-000	G8	52161-051-000B	H4	64301-096-700ZA	G13	89010-046-610	G16	90603-046-000	C11
42610-030-000	G11	45450-096-651	G3	52181-001-300	H4	64310-096-700ZA	G5	89212-001-000	G16	90741-253-000	C15
42620-001-010	G11	45450-096-700	G3	52400-096-000AW	H6	64310-096-700ZB	G5	89214-001-000	G16	90753-029-010	G11
42653-001-004	G11			52400-096-000UL	H6	64320-086-300	G5				
42701-030-003	G11	46000		52401-034-000	H6	64321-086-300	G5	90000			
42701-030-006	G11			52409-011-000	H6	64330-086-000	G5			91000	
42711-052-009	G11	46500-096-700	H3			64341-046-750XW	G13			91101-001-030	C15
								90012-200-000	C6	91201-028-000	C3

PART NO. INDEX

Part No.	Address No.	Part No.	Address No.	Part No.	Address No.	Part No.	Address No.	Part No.	Address No.	Part No.	Address No.
91201-030-000	C16	93500-05010-0A	C3	94021-08000-0S	G5	95000		99000			
91203-023-020	C9	93500-05012-0A	C14	94021-08000	C2						
91204-121-000	D1		H1		G14	95001-35270-40	D2	99001-08120	G16		
91204-121-005	D1	93500-06010	C5	94021-10000-0S	H6	95001-55450-40	G15	99001-09000	G16		
91251-121-000	G8	93500-06012	C4	94022-06020	G13	95002-02070	D2	99001-10140	G16		
91252-030-003	G9		C5	94030-08000	C2	95002-02100	G15	99002-13500	G16		
91252-030-005	G9		C7		G11	95002-02650	D2	99003-10000	G16		
91301-028-000	C2		D1	94030-10000	H12	95011-21000	H2	99003-20000	G16		
91301-216-000	C7		G3	94050-06000	H8	95011-31000	H5	99003-30000	G16		
	C12		H10	94101-04000	G5	95011-51000	H2	99003-50000	G16		
91302-200-000	C2	93500-06016	C14	94101-06000	G5	95011-61000	H1	99004-18001	G16		
91303-001-000	C9	93500-06020	C2		G10	95011-63000	G15	99008-01600	G16		
91305-028-158	C5		C12		G12	95014-61300	H11	99101-116-0780	D2		
91307-035-000	C9		G5		G13	95014-72102	H2				
		93500-06025	C9		G14	95014-73100	H3				
92000			C12		H3	95014-92100	C16				
			C14		H4	95015-11100	C12				
92000-05016-0A	H9	93500-06032	C12	94101-08000	G5	95015-32001	G9				
92000-06006	H4	93500-06035	C12		G10		H3				
92000-06010	C7	93500-06040	C9		H4	95015-42000	G9				
	C16		C14	94101-10000	H4		H3				
92000-06014	C3	93500-06065	C9		H6	95015-61000	H5				
92000-06016	D1	93600-05012-0A	C11	94101-12000	H6	95015-81000	H5				
	G6	93700-05018-0A	H7	94109-12000	C14	95015-91000	H5				
92000-06018	G13	93700-05022-0B	C4	94111-03000	D2	95300-08028	G4				
92000-06020	H2	93891-06020-10	G15	94111-04000	D2	95300-08032	G7				
92000-06022	C2		H10	94111-05000	C14	95300-08050	G7				
92000-06025	C2	93892-05020-10	G3		H9	95700-06028-00	G9				
	C12	93892-05032-10	G3	94111-06000	G10	95700-06032-00	G10				
92000-08016-0A	G14	93901-24010	G5		G12						
92300-06012	H10	93901-24110	H7		G14	96000					
92700-06032	C5		H8		H11						
92800-12000	C14			94111-08000	G3	96100-60000	C11				
		94000			G4	96100-60040	C16				
93000					G5	96100-62040	C16				
		94001-06000	G3		G7	96100-63050	C15				
93000-06028	H8		G5		G14	96120-62030	G12				
93481-06010-00	H4		G10		H1	96140-63010-10	G9				
93481-06012-00	G5		G11	94111-10000	G10		G12				
93481-06020-00	G15		G13		G13	96201-30000	G7				
93481-08016-00	G4		G14		H12	96211-06000	G6				
	G15		G16	94201-16150	H3						
93482-06008-00	H12		H1		H5	97000					
93482-06012-00	H10		H10	94201-20150	G10						
93482-08020-00	H2	94001-08000-0S	C9		H5	97145-21159-10	G9				
93483-06016-00	H10		G3	94201-30250	G9	97251-42163-13	G12				
93500-03005-0A	H8		G4		G12	97519-42162-12	G12				
93500-03012-0H	D2		G7		H3	97520-21158-10	G9				
93500-03025-0B	H7		G10	94301-10140	C5						
	H8		H1		C9	98000					
93500-04006-0A	H7		H4		C13						
93500-04014-0H	D2	94002-08000-0S	C8		C14	98066-56715	C2				
93500-04020-0A	H12		G7	94301-10200	C5	98066-56724	C2				
93500-04050-0A	H9	94002-10000-0S	G13	94510-20000	C11	98200-11000	H11				
93500-05008-0A	C11		H2								
		94011-12000-0S	G9								
			G11								