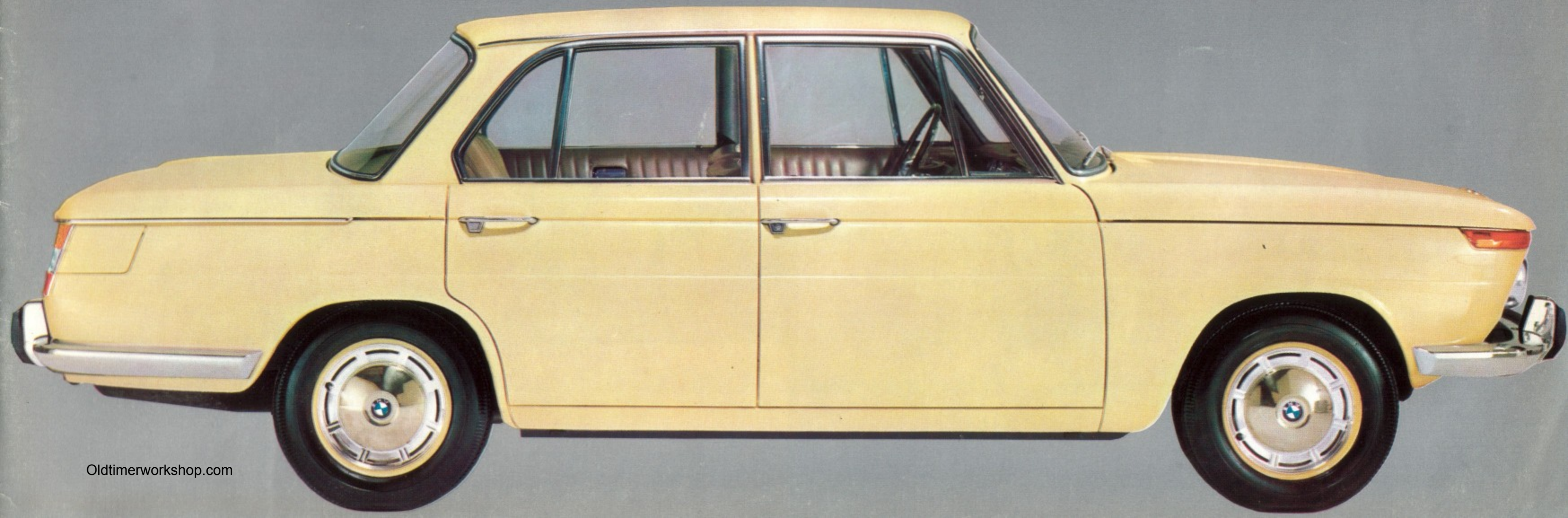




BMW 1500

MODEL 64





BMW 1500—A NEW CLASS

The BMW 1500 is the right car for sophisticated tastes. It has something special to offer in every respect. Since its introduction it has proved itself in all conditions, and has gained a multitude of friends in a short time. Its reputation is based on three main characteristics.

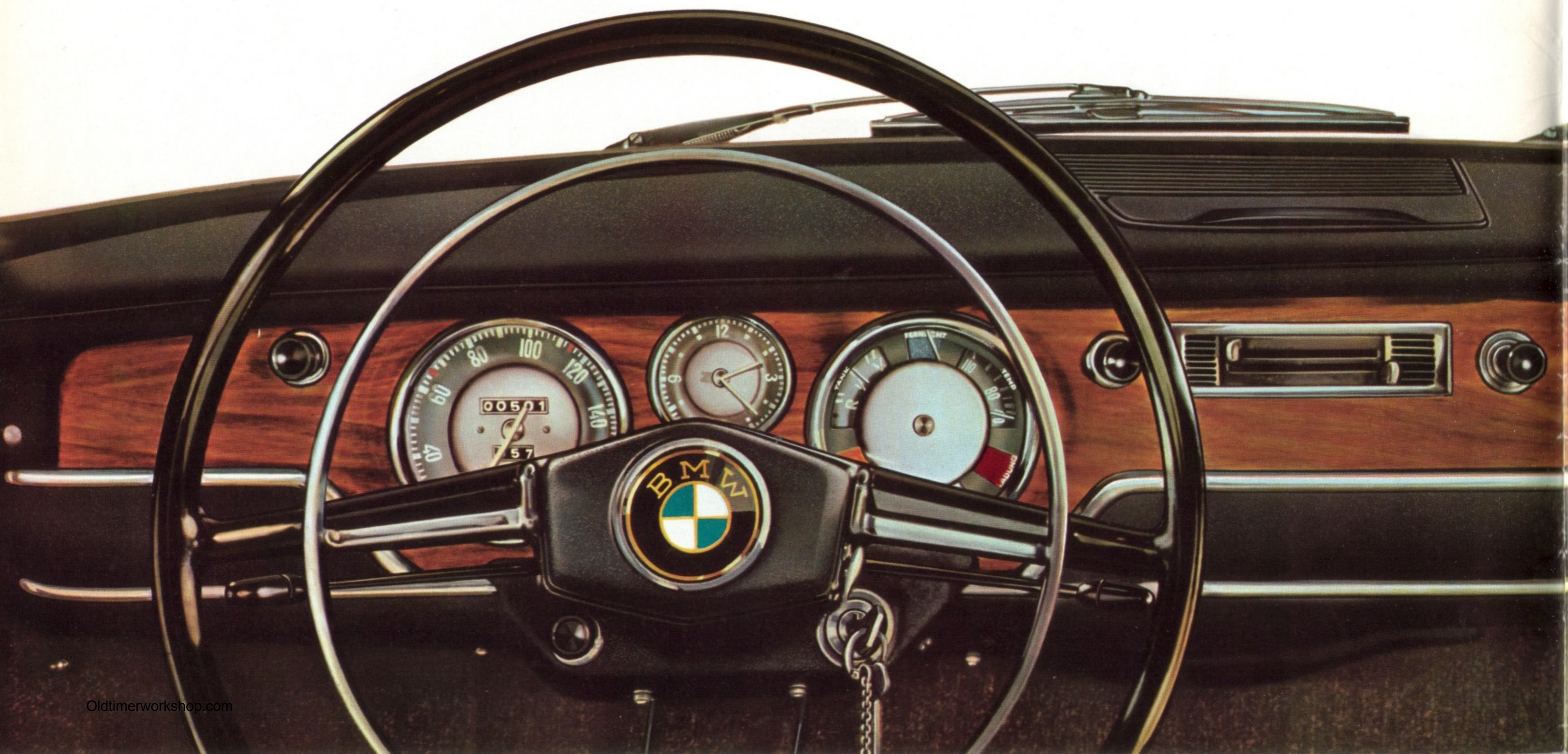
The exemplary way in which the structural units are matched — the thrilling driving performance — the exceptional safety.

The BMW 1500 is however distinguished not only because of this "technical harmony". It is the answer to your dreams in appearance, equipment, comfort.

By improvements in equipment, model 64 has been made even more handsome, more elegant, more comfortable.



From left to right: Padded anti-glare instrument panel • Control for parking lamp and dipped beam, combined with infinitely variable instrument illumination • Speedometer with daily mileage indicator. Electric clock • Instrument panel with control lamps for battery charge, oil pressure, main beam,



choke, direction indicators, scale for fuel-
and operating temperature • 2-speed
electric windshield wiper • Operating
lever for fresh air and heater. Switch
for 2-stage fresh air fan • Ashtray •
Cigar lighter • Glove box • Handle for
front seat passenger • Nonslip safety
steering wheel with recessed hub and

continuous annular twin-tone horn ring •
Control for main beam, asymmetri-
cal dipping beam and overtaking
signal • Control for direction indica-
tors and automatic windshield
washer • Ignition steering column
lock with garage position and repea-
ted starting lock.



The man who sits behind this steering wheel drives for the sheer joy of it. You need only sit in this car to realise that it must be fun to drive. It's all there: whatever you handle, whatever you look at: engineering in the service of your safety.

One example: The automatic BMW windshield washer. Operated on a finger-tip. No need to take your hand off the steering wheel to give you clear vision when overtaking on a wet and dirty road. The windshield is automatically rinsed, washed, and wiped clear.



You feel at home in this car. Everything inside is light and clean. The view is unimpeded from all seats and on all sides. The carefully selected materials, the harmoniously matched interior provide a comfortable atmosphere. The wide and solid upholstered seats are shaped so that they support the back, firmly hold the body, and permit fatigue-free driving even on long journeys. The quick-acting fresh-air heater provides comfortable warmth. It mixes cool fresh air and hot air according to choice and uniformly distributes it inside the car. The natural atmospheric humidity is maintained, providing healthy air-conditioning even on long trips.

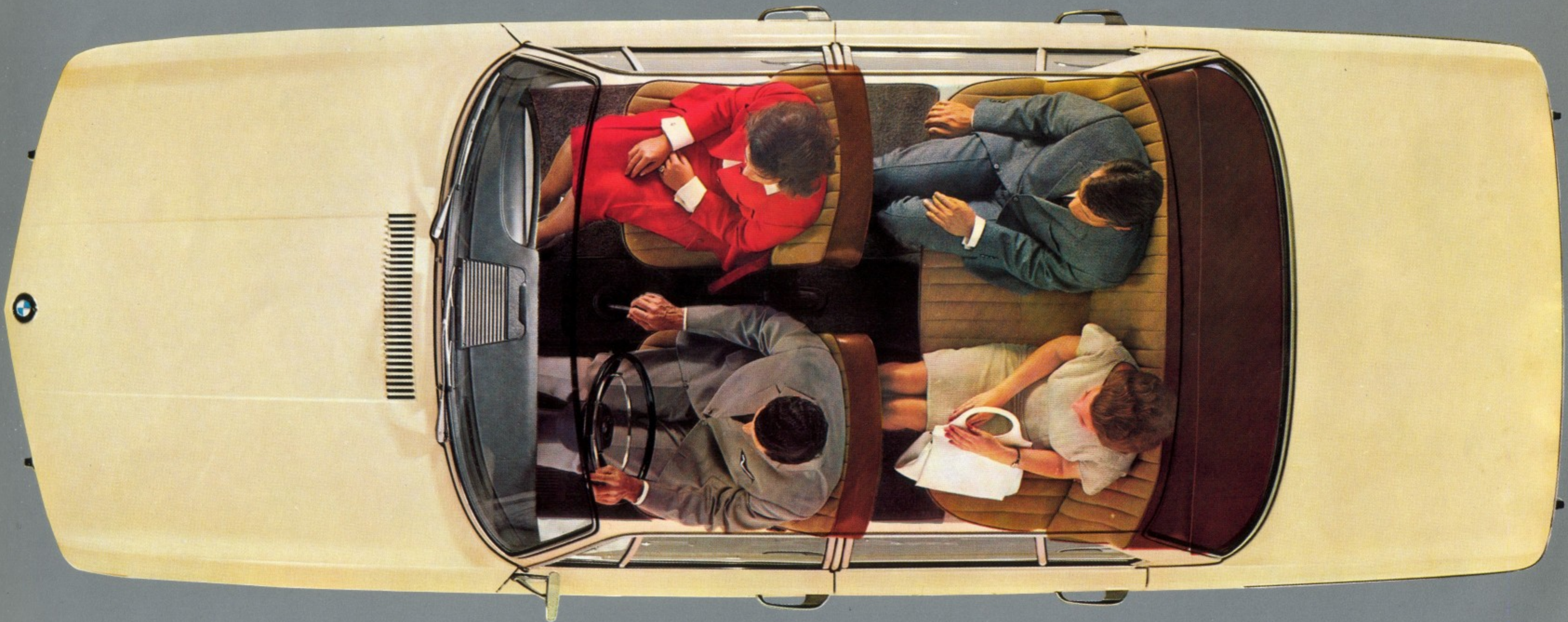
Obvious but pleasant :

Safety door handles recessed under the arm rests • Both front doors can be locked and bolted from inside • Safety catches to prevent accidental opening (children) while the car is in motion. Four fully retractable winding windows • Front: 2 swivelling quarter-

lights with rotary knob and self-locking device • 2 handles in the rear of the car, with clothes hooks • 2 ashtrays in the rear of the car • Full-width rear window shelf • Washable headlining. Pockets in both front doors • Pockets on backs of front seats

A view from above on to and into the BMW 1500. You can see for yourself: There is plenty of space and comfort for everybody—and everybody has his own wide door.

What you cannot see (but it is reassuring to know): you sit in allsteel chassis—in a car body which offers you maximum safety. The distortion-resistant floor unit is welded to the body unit. Rigid stability in all directions is provided by the high-webbed longitudinal members and the integrally arranged struts.



And now—bon voyage
You soon become familiar with the BMW 1500. Whether
you are just ambling along or travelling at speed, the car
always conveys a pleasant and reassuring sense of safety.





Up to 75 m. p. h. (120 km/h) even in third gear.

Powerful acceleration always.



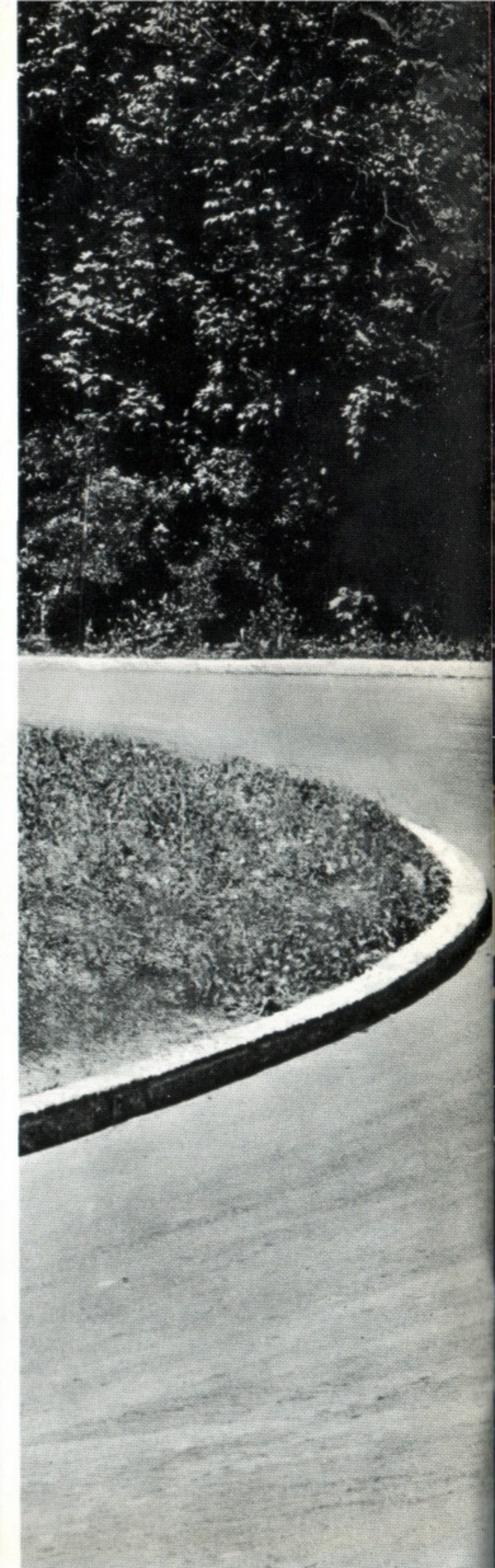
Masters all situations.

You can drive the BMW 1500 like a sports car. You have 80 metric hp under the bonnet. In 16,8 sec. you can reach 62 m. p. h. (100 km/h) from 0. The power reserves of the engine provide additional safety during overtaking. Should you find yourself in difficult situations, change down, accelerate . . . and away you go.

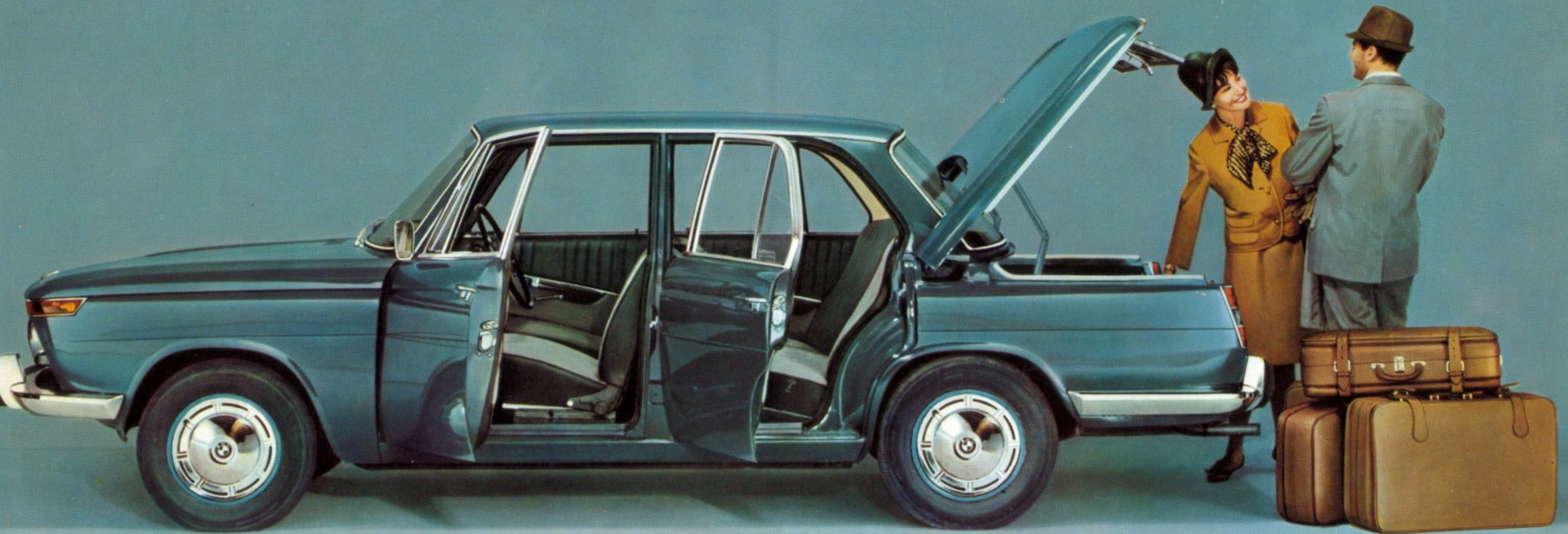
And if an emergency arises—the firmly gripping disc brakes permit shortest braking distances.



Roads are not just bad, not just rough. They have tight bends, bends within bends, potholes and ridges in the potholes. Roads are full of surprises. Whatever action you are forced to take, the BMW 1500 follows you. This is where the balanced design of the vehicle, the unrivalled combination of springleg front axle and rear wheels suspended from longitudinal arms, the excellent springs, the accurate track-holding, light-touch steering system come into their own.





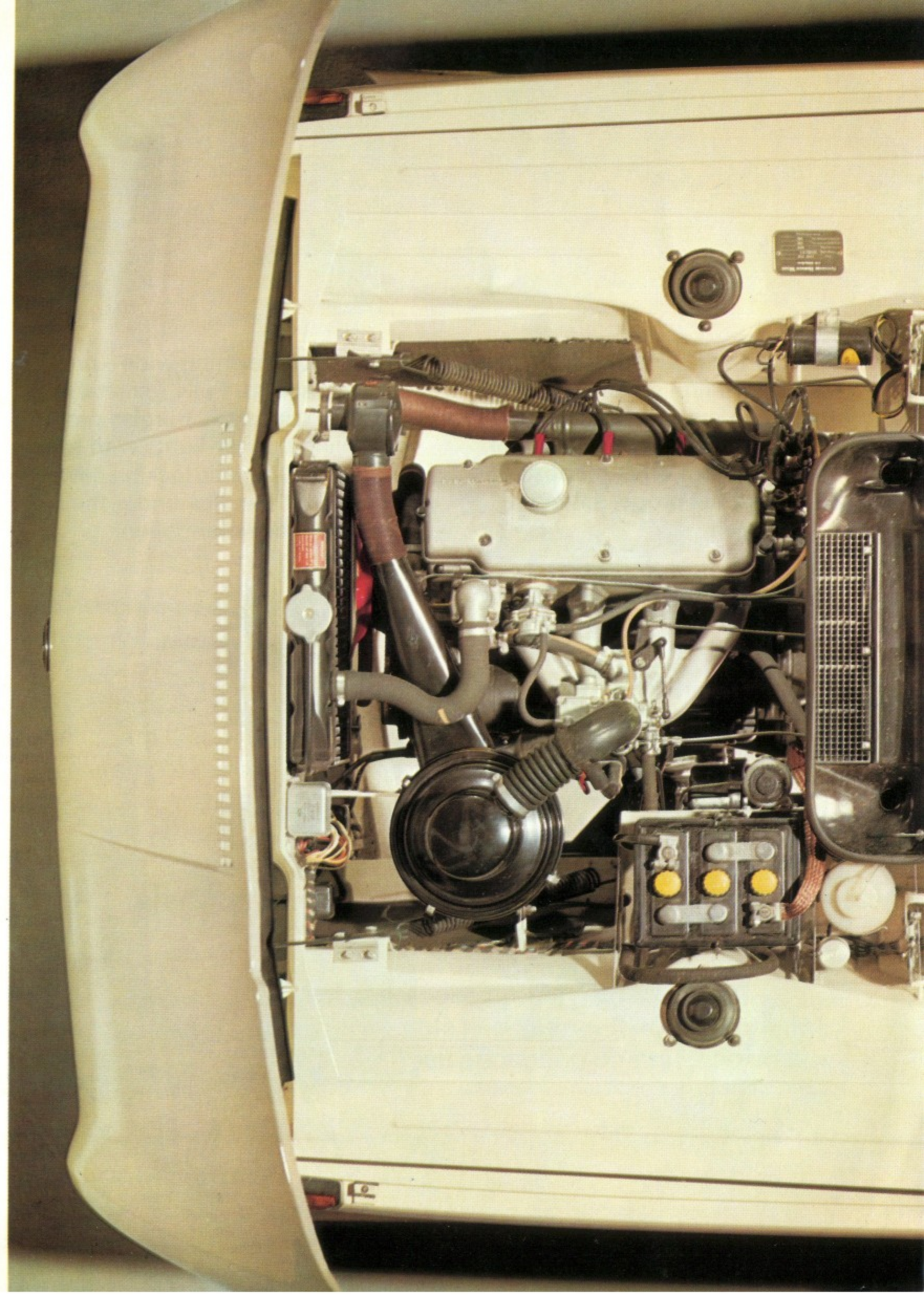


The large luggage boot is neat and tidy, without recesses and corners. Note: The spring-assisted lid. Easy to operate with one hand. The low-level edge makes loading easy. The spare wheel is under the floor of the boot, where it is not in the way, soils nothing, and is yet readily accessible.

Open the bonnet – what you see is the robust “power unit” of the BMW 1500. Big and strong. Confidence-inspiring! Here slumbers the 80 metric h.p. which you can bring to life by gentle pressure on the accelerator. 80 h.p. which make you the master of the road. Everywhere – in town – in country – even in the mountains.

The engine compartment is neat and tidy. The safety bonnet opens forward. Inadvertent opening while the car is in motion is impossible.

The highly flexible 4-cylinder 4-stroke in-line engine with inclined valves guarantee high performance and safety in operation. It is mounted at an angle of 30°. Constant oil circulation gives excellent lubrication. The combustion space is designed as a turbulence pan so that the air-gas mixture is subjected to controlled turbulence. Complete ignition gives optimum fuel utilisation, which means economic running and high performance. The crankshaft has five 4-layer journal bearings which ensures smooth running over the entire range of revolutions.



Custom-built seats. Superbly finished. Provide firm support for sides and shoulders and back. By turning a knob you can place the rear of the seat in four different positions and select the proper setting to suit yourself.



Broad doors opening wide – providing easy access. Fully retractable winding windows. Burglar-proof swivelling quarter-lights with rotary knob and automatic locking device. Safety door handles under the arm rests. No inadvertent opening.



The mirror can be made anti-glare by a simple adjustment.



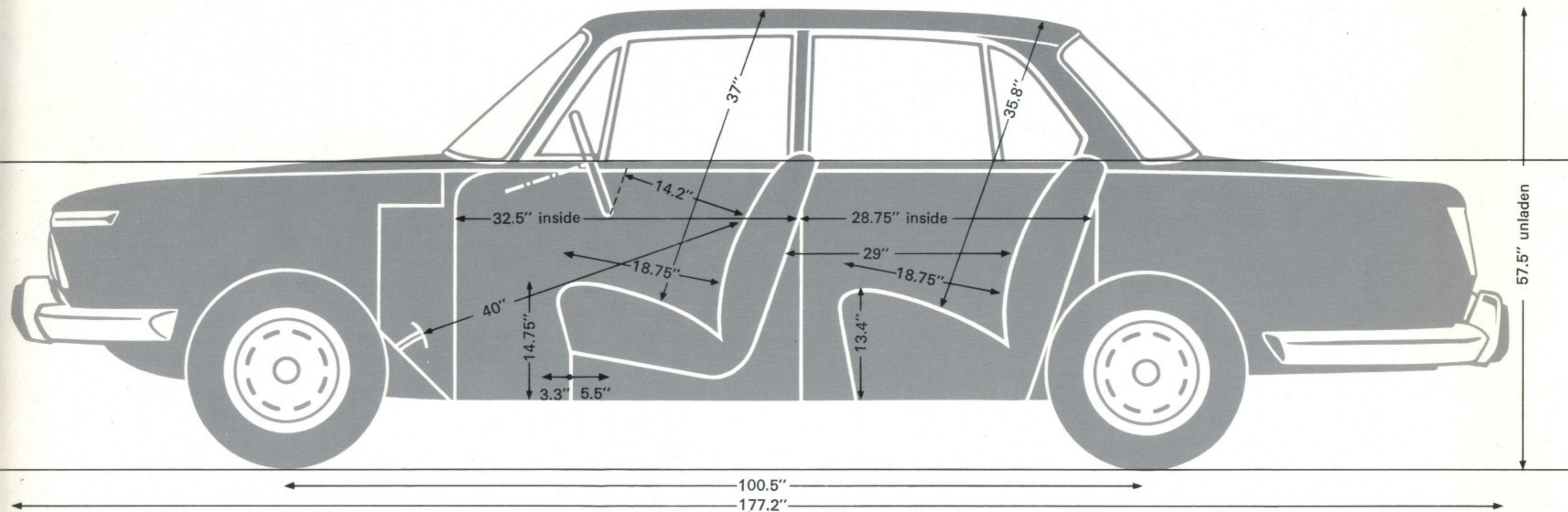
General equipment

Speedometer with daily mileage indicator; instrument panel for indication of cooling water, fuel, oil pressure, main beam, direction, battery charge, and starters; ignition switch with lock and repeated starting lock; electric clock; infinitely variable instrument illumination; interior lamp with door contacts; cigar lighter; luggage boot lamp; parking lamp; 2-speed windshield wiper; automatic windshield washer; continuous annular horn ring on safety steering wheel; 3 ashtrays; 2 padded sun visors, one with beauty mirror; recessed handle for front seat passenger; flexible handles with clothes hooks for rear seats. Floor carpet in the rear; washable headlining; 2-tone doorlining; pockets on front doors; safety belt anchoring points; 2 pockets on backs of front seats.

Engine:	Water-cooled BMW 4-cylinder 4-stroke in-line engine inclined at 30°, with overhead camshaft and inclined valves.	Rear:	Independently sprung wheels, wheels on inclined longitudinal bars; helical springs with auxiliary rubber-air spring; spring deflection $7\frac{7}{16}$ " (190 mm); double-action telescopic shock absorbers with long travel	Luggage boot:	Spring-assisted lid, capacity 21.2 cu.ft. (600 l), high storage capacity, level floor, spare wheel covered under floor	Height:	4 ft. $9\frac{1}{8}$ " (1450 mm) unladen 4 ft. $7\frac{1}{8}$ " (1400 mm) laden
	Turbulence pan						
Cubic capacity:	91.4 cu.ins. (1499 c.c.), stroke $2\frac{13}{16}$ " (71 mm), bore $3\frac{1}{4}$ " (82 mm)	Steering:	ZF-Gemmer steering with worm and roll, 3-part track rod; transmission ratio: 17.58	Engine compartment:	Front-hinged bonnet with safety lock	Wheel base:	8 ft. $4\frac{3}{8}$ " (2550 mm)
Maximum output:	80 DIN metric h.p. at 5700 r.p.m.						
Maximum torque:	166 ft. lb. (12 DIN mkg) at 3000 r.p.m. 163 ft. lb. (12.5 SAE mkg) at 3200 r.p.m.	Tyres:	6.00-14 tubeless, low cross-section with rounded shoulder	Heating:	Quick action, high capacity fresh-air heater with immediate response, fine-adjustment temperature control for cold and hot air mixing. Natural atmospheric humidity maintained, giving healthy air-conditioning; distributed according to choice to demisters and foot space; 2-stage electric fan	Track front:	4 ft. 4" (1320 mm)
Compression ratio:	8.8:1	Front brake:	Self-adjusting disc brake, disc diameter $10\frac{1}{2}$ " (268 mm)	Windows:	4 fully retractable winding windows. Front: 2 swivelling quarter-lights with rotary knob and self-locking device; window area 25 sq.ft. (23000 cm ²); 85% free all-round vision	rear:	4 ft. 6" (1374 mm)
Ignition:	with centrifugal and vacuum control	Rear brake:	Simplex drum type, $9\frac{7}{8}$ " (250 mm) diameter			Turning circle diameter:	about 31 ft. 6" (9.60 m)
Carburettor:	Solex downdraught carburettor with acceleration pump and choke valve	Handbrake:	On rear wheels only, brake lever between front seats	Fuel tank capacity:	about 11 gallons (53 l)	Ground clearance:	about $5\frac{7}{8}$ " (150 mm)
Transmission:		Body:	Distortion-free all-steel body welded to floor unit, light-weight construction			Weight, dry:	2196 lb. (996 kg)
		Doors:	4 front-hinged doors, opening to almost 90°. Width, front: $37\frac{1}{2}$ " (953 mm), rear: $34\frac{1}{8}$ " (867 mm). Front doors individually lockable; rear doors with inside locks	Electrical equipment		Unladen weight:	2315 lb. (1050 kg)
Clutch:	Hydraulically operated single dry plate clutch with torsional-vibration damper	Front seats:	Individual adjustable seats, rounded at shoulder width, adjustable backs, fabric wear-resistant and self-ventilating			Load:	882 lb. (400 kg)
Gear box:	4-speed synchromesh, 1 reverse gear; centre position	Rear seat:	Bench seat with long support for thighs	Battery:	6 V, 77 Ah, with large capacity	Permissible total weight:	3197 lb. (1450 kg)
Gear ratios:	1st gear: 3.816; 2nd gear: 2.07; 3rd gear: 1.33; 4th gear: 1; reverse gear: 4.153	Seat width:	Front 2x23" (585 mm), rear 4ft. $5\frac{3}{4}$ " (1366 mm)	Dynamo:	200/300 W	Permissible trailer load:	2646 lb. (1200 kg) braked; 1102 lb. (500 kg) unbraked;
Rear axle gear:	4.375; hypoid drive; casing flexibly mounted.	Elbow width:	Front 4ft. 6" (1375 mm), rear 4ft. 6" (1375 mm)	Lights:	Asymmetrical dipping beam, rear light panel with flashing indicators, stop light, reversing lamp, tail light, and parking light	Maximum speed:	93 m.p.h. (150 km)
Rear wheel drive:	2-double-jointed shafts	Shoulder width:	Front 4ft. $4\frac{3}{4}$ " (1340 mm), rear 4ft. $4\frac{3}{8}$ " (1330 mm)	Dimensions:		Acceleration:	from 0 to 62 m.p.h. (100 km) in 16.8 sec. standing km: in 36.8 sec.
Suspension, steering, tyres, brakes:						Petrol consumption:	28.6 m.p.g. (9.9 l/100 km) at 68.3 m.p.h. (110 km)
Suspension, front:	Springleg axle with transverse guiding link, rubber-mounted, spring deflection $6\frac{11}{16}$ " (170 mm)						

BMW reserve the right to alter any details of design, equipment, and accessories described and illustrated in this publication at any time without notice, if they consider this necessary in the interest of further development or for reasons of manufacture or sales policy. Data on dimensions, weight, and performance are subject to the appropriate tolerances.

In Great Britain and abroad, BMW agents provide expert servicing of BMW vehicles.



your local dealer

Bayerische Motoren Werke AG München